

Endura Parking Tile Solutions

**BUILT FOR LOAD.
DESIGNED FOR LIFE.**

From daily footfall to fire tender weight - Endura tiles hold their ground with style.





INDEX

MAXGRIP 60X60 CM (R11)	14
MAXGRIP 30X30 CM (R11)	20
METEOR	23
SANDEX (NEUTRAL MATT)	30
ENDURA DESIGNER COLLECTION 40X40 CM	35
ENDURA DESIGNER COLLECTION 30X30 CM	49
CORE ENDURA (PLAIN)	53
CORE ENDURA (COLOUR)	56
GOOD GRIP	59
ROCKWAY	65
TACTILE	69
PACKAGING DETAILS	73

● MADE TO ORDER: REQUIRED TIME: 45 DAYS. MINIMUM QUANTITY: 1500 SQM

SOME SURFACES WORK HARDER THAN OTHERS. THEY DESERVE ENDURA.

Parking isn't just a pause. It's friction. Pressure. Impact.

Every surface in a parking zone endures more in a day than most floors do in a year.

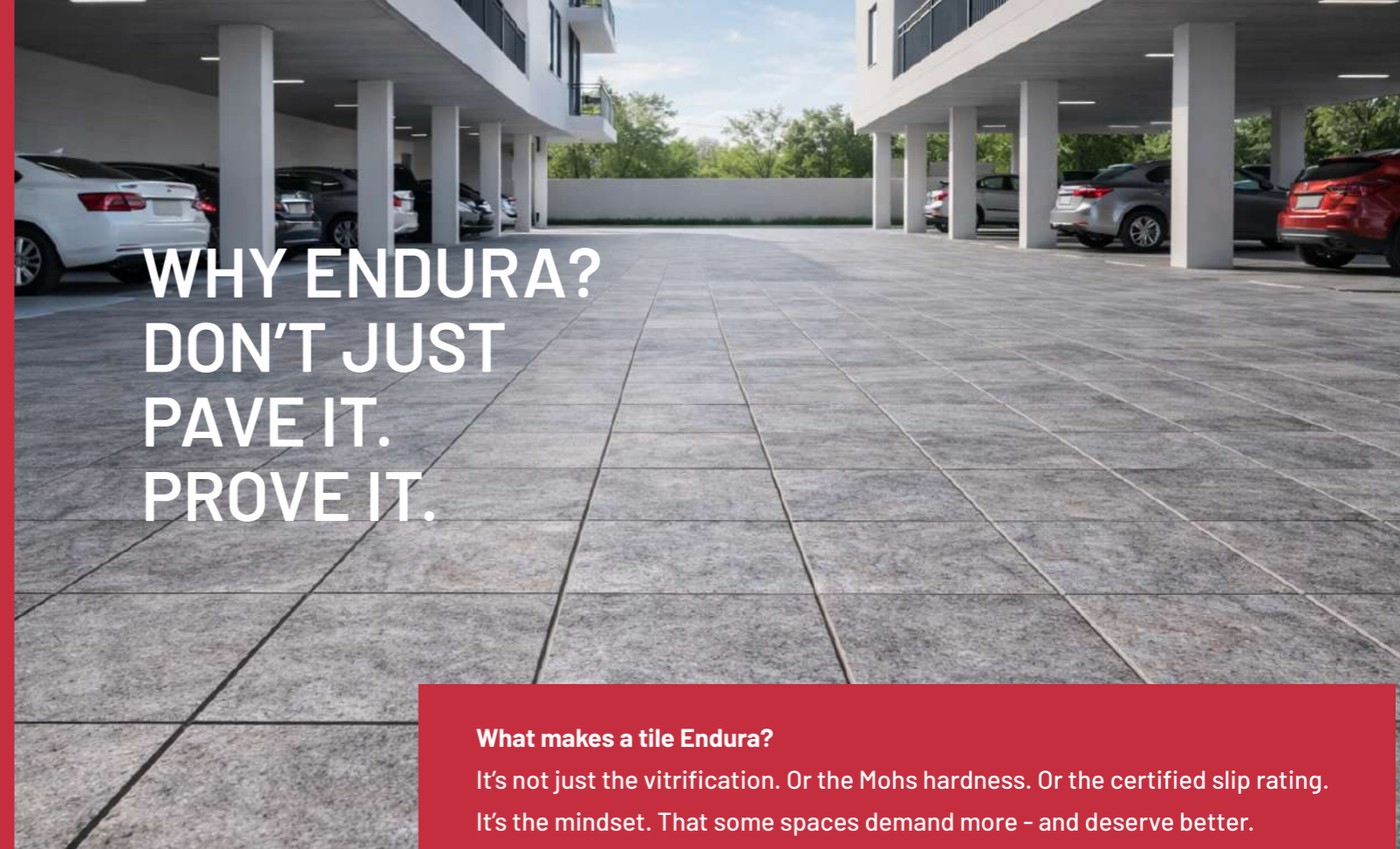
So we built tiles that don't just survive - they thrive.

Welcome to Endura - Johnson's range of vitrified heavy duty tiles engineered for places that bear the brunt.

Whether it's a bustling mall entrance or a sloped residential ramp, Endura tiles do what lesser surfaces can't: hold up under weight, wear, weather and time – and still look good doing it.

Crafted for driveways, garages, stilt zones, patios, pathways and more, Endura tiles offer unmatched load-bearing strength, low maintenance, high performance and enduring design appeal.

Because parking is not an afterthought. It's the first impression.



WHY ENDURA? DON'T JUST PAVE IT. PROVE IT.

What makes a tile Endura?

It's not just the vitrification. Or the Mohs hardness. Or the certified slip rating. It's the mindset. That some spaces demand more - and deserve better.

Endura tiles are made for punishment. Heavy vehicles. Slippery monsoons. Vehicle Tyre Brake marks. UV rays. Cleaning acids.

We engineered them to take it all, and give nothing back.

HERE'S WHY ENDURA PERFORMS WHERE OTHERS CRACK:



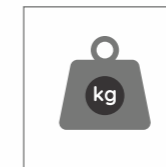
Superior Durability

Fully vitrified, with surface hardness > 6 on the Mohs scale. Withstands daily friction from vehicles and people alike.



Low Water Absorption

< 0.5%, so stains, spills and seeping liquids don't make it in. High stain resistance for outdoor zones as they are not maintained like indoor floors.



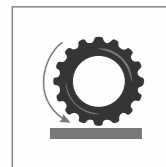
Load-Bearing Capacity

From compact cars to trucks and fire tenders – no cracks, no complaints. Ultimate heavy duty strength.



Anti-Skid Surface

High R Value -R9 or higher provides grip even in the wettest conditions. Endura tiles other than R11 also offer strong skid resistance.



Abrasion & Scratch Resistance

Full-body tiles with abrasion resistance <math>< 120 \text{ mm}^3</math>. Glazed tiles with PEI rating >4.



Chemical & Acid Resistant

Built to endure regular cleaning with chemicals.



Weather Toughness

Rain. Heat. UV. It's seen it all - and kept its finish.



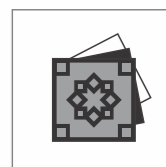
Stain Shield

Stays clean-looking. Because aesthetics shouldn't take a beating.



Maintenance Ease

Easy to clean. Easier to live with.



Design Versatility

Colours. Finishes. Patterns. Pick the one that suits your space and still stands up to stress.

So no, these aren't just vitrified tiles. They're reinforcements, disguised as flooring. And they come with very high breaking strength, built by the right combination of high MOR and required thickness, so they stay dependable under both static and dynamic loads.



WHERE HEAVY DUTY MEETS EVERYDAY BEAUTY.

A parking tile has to do more than just look the part. It must handle the daily grind – quite literally. Every zone has its own pressure points, and Endura meets each one head-on, with tiles purpose-built for their specific application. From family cars to commercial fleets, from open skies to basement stilts, there's an Endura tile made for every turn, brake, and burn.

Where Endura Belongs:

Driveways & Garages

The first encounter. And the most worn-out zone. Choose tiles that welcome and withstand.

Commercial Parking Lots & Malls

Heavy vehicles, high footfalls, and higher standards – built for performance and polish.

Public Parking Zones

Endura doesn't fade with time or tire marks.

Residential Building Stilt & Basement Parking

Resistant to seepage, staining, and moisture-trapped gloom.

Outdoor Pathways & Landscapes

Aesthetic, weather-resistant, and always composed under pressure.

Ramps & Slopes

Grip where it matters. No slips, even under rain and brake force.



DIFFERENT LOADS. DIFFERENT NEEDS. ONE NAME.

Behind every Endura tile is a simple idea: match the right surface to the right stress point. Using insights from our exhaustive application matrix, here's a snapshot of how our series stack up:

Series	Where It Fits Best
ROCKWAY	Basement & Stilt Parking, Car Porch, Driveways, Landscape area, Open to Sky Parking, Podium parking, Veranda / Sit-out Area, Walkways / Pathways / Footpaths
GOOD GRIP	Basement & Stilt Parking, Refuge area, Walkways / Pathways / Footpaths
CORE ENDURA COLOR	Basement & Stilt Parking, Landscape area, Veranda / Sit-out Area, Walkways / Pathways / Footpaths
CORE ENDURA PLAIN	Basement & Stilt Parking, Refuge area, Veranda / Sit-out Area, Walkways / Pathways / Footpaths
ENDURA DESIGNER COLLECTION	Basement & Stilt Parking, Car Porch, Driveways, Landscape area, Podium parking, Veranda / Sit-out Area, Walkways / Pathways / Footpaths
MAXGRIP	Basement & Stilt Parking, Car Porch, Driveways, Landscape area, Open to Sky Parking, Podium parking, Ramp Area, Walkways / Pathways / Footpaths
SANDEX NEUTRAL MATT FINISH	Basement & Stilt Parking, Car Porch, Landscape area, Podium parking, Veranda / Sit-out Area, Walkways / Pathways / Footpaths
METEOR	Basement & Stilt Parking, Car Porch, Landscape area, Podium parking, Veranda / Sit-out Area, Walkways / Pathways / Footpaths
TACTILE	Guidance tiles for Footpaths, Public Walkways, Transit Zones, Entrances, Ramps



SIZE MEETS STRENGTH

You don't just pick by look. You pick by purpose. And Endura gives you both. The Endura range is tailored for everything - from light strolls to axle-breaking loads. Endura tiles come in a full spectrum of formats and thicknesses - each engineered to match specific load types, movement patterns, and surface aesthetics. Here's how the series break down:

Series	Size (cm)	Thickness	Signature Trait
MAXGRIP (R11 Rated)	60x60	15 mm	Brutally strong. Beautifully composed.
MAXGRIP (R11 Rated)	30x30	15 mm	Compact format. Same grip and grit.
METEOR	60x60	15 mm	Takes the load. Without the wear.
SANDEX NEUTRAL (Neutral Matt)	60x60	10 mm	Blends in with the best. Holds up like the rest.
ENDURA DESIGNER COLLECTION	40x40	11 mm	Versatility, simplified.
ENDURA DESIGNER COLLECTION	30x30	10 mm	Strength in a tighter footprint.
CORE ENDURA (Plain)	30x30	10 mm	Easy on the eye. Tough on wear.
CORE ENDURA (Colour)	30x30	10 mm	Aesthetic meets endurance.
GOOD GRIP	30x30	10 mm	Traction you can trust.
ROCKWAY	12x24, 24x24, 24x36	15 mm	Textured like nature. Stronger than stone.
TACTILE	30x30	12,15,25 mm	Warning tiles for Visually Impaired, Skid Resistant

LOOKS ALONE DON'T LAST. ENDURA DOES.

Why Endura Beats Cement pavers, Concrete & Epoxy

Cement surfaces crack under pressure. Epoxy coatings scratch under wheels. Both look tired too soon, and cost more over time. Endura tiles? They don't just last. They outperform. Here's how the facts stack up:



Endura isn't just stronger. It's smarter. Modular, replaceable, maintenance-friendly.



Vs Cement Pavers/Concrete

FEATURE	Cement / Concrete	ENDURA TILES
ABRASION RESISTANCE	Wears down quickly under traffic and tyre pressure	10x better abrasion resistance - handles traffic without fading
SCRATCH RESISTANCE	Easily scratched by grit from tyres and soles	No scratches from grit - Mohs hardness >6 keeps it sharp
UV & WEATHER RESISTANCE	Discolours and cracks with sun and rain	UV & weather resistant - no patchy, sunburnt ageing
WATER ABSORPTION & STAINS	High absorption; allows seepage and staining	Low water absorption (<0.5%) - resists stains from the inside out
CHEMICAL RESISTANCE	Can't be cleaned with common acids or alkalis	Acid/alkali safe - wash it with regular cleaning agents

Vs Epoxy

FEATURE	Epoxy	ENDURA
TRACTION	Poor	High
SCRATCH RESISTANCE	Mohs 4-5	Mohs ≥ 7
ABRASION RESISTANCE	Low	<120 mm ³
LOAD TOLERANCE	Can't take point loads	Handles fire tender weight
REPAIRABILITY	Difficult, patchy	Replace one tile
MAINTENANCE	Costly, shuts down work	Minimal
LONGEVITY	Delicate	Durable



LAI D RIGHT, IT LASTS FOREVER.

Endura tiles are built to last. But how you install them decides how long they stay flawless. A smart product deserves a smarter install – one that anticipates load, slope, drainage, and weather.

Installation Tips:

- Start with a solid base: Ensure a stable, well-compacted, and well-drained subfloor – whether RCC or mortar bed.
- Use the right adhesives & grout: Go for those designed for outdoor and heavy-duty application.
- Don't skip expansion joints: Let the tiles breathe and flex with seasonal temperature changes.
- Mind the slope: Especially in open-to-sky parking areas – standing water shortens surface life.

Maintenance Tips:

- Daily cleaning: Just mild detergents and water. No fancy chemicals required.
- Tough stain? Endura tiles are acid-wash safe (within reason).
- Tile damaged? Just replace one – not the whole floor.
- Low effort, high reward: Because beauty that's high maintenance isn't really beautiful.

Think of it this way:

Once it's down, Endura becomes the one thing about your parking you won't have to think about again.

MAXGRIP
60X60 CM

Brutally strong. Beautifully composed.

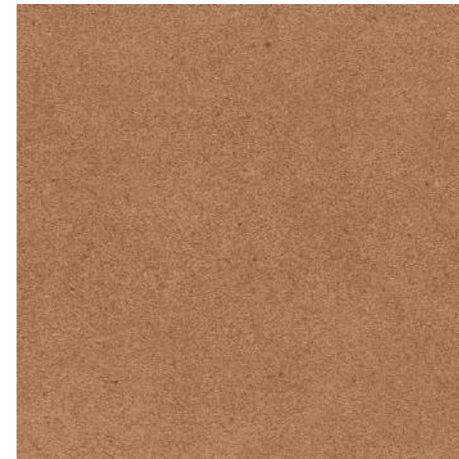


Series : Maxgrip - R11

Size : 60x60 cms

Thickness : 1.5 cm

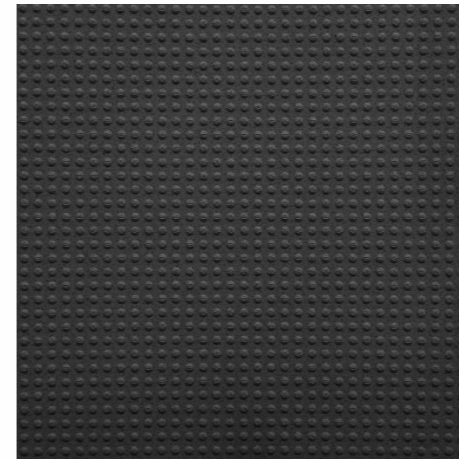
Finish : Matt



Blush Bruno



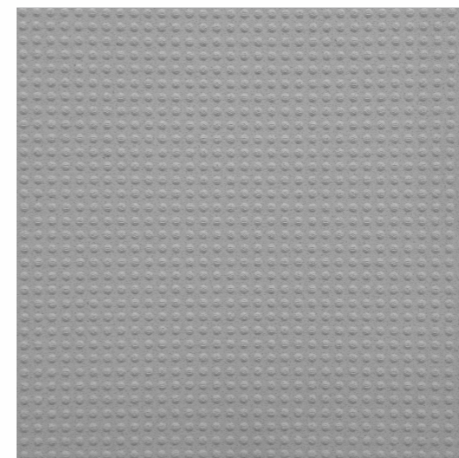
Dots Beige



Dots Benaulim



Dots Grey



Dots S&P Grey



Dots Teracota

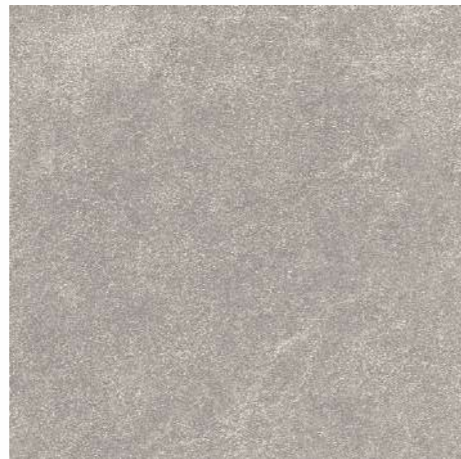


Series : Maxgrip - R11 Size : 60x60 cms Thickness : 1.5 cm Finish : Matt

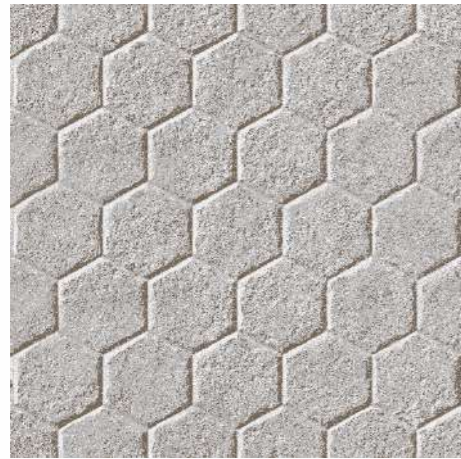
Series : Maxgrip - R11 Size : 60x60 cms Thickness : 1.5 cm Finish : Matt



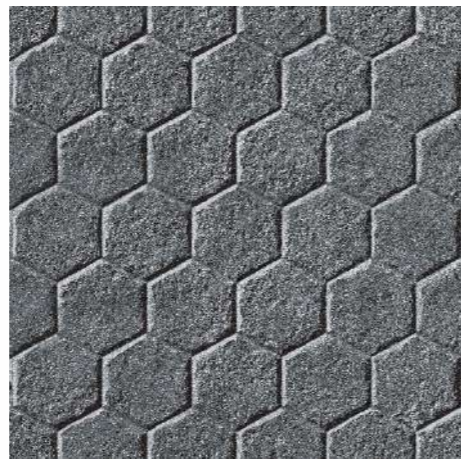
Rock Beige P



Rock Grey P



Rock Hexa Grey P



Rock Hexa Nero P



Rock Nero P



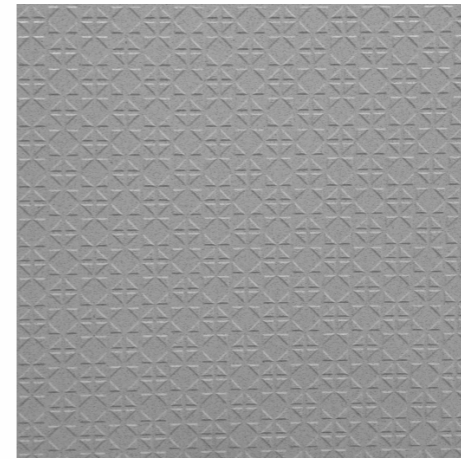
Triangle Beige P



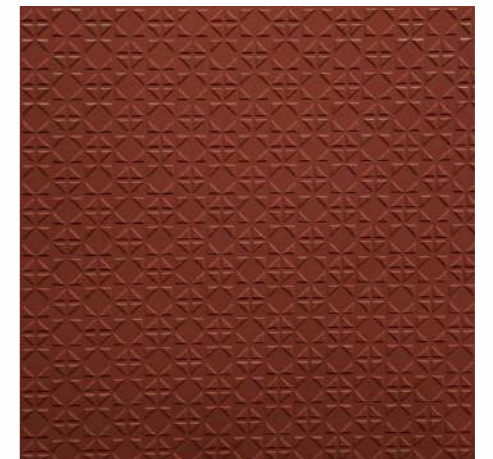
Triangle Benalium P



Triangle Grey P



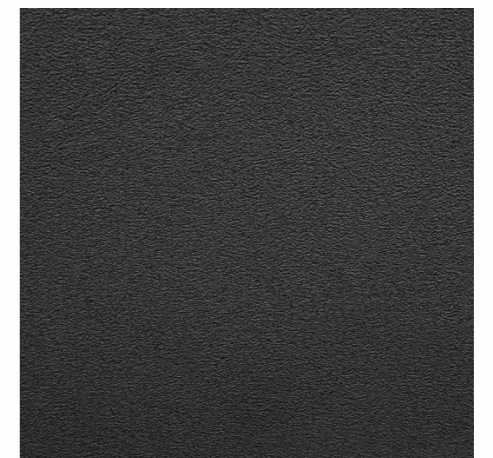
Triangle S&P Grey P



Triangle Teracota P



Volcano Beige P



Volcano Benalium P

Series : Maxgrip - R11

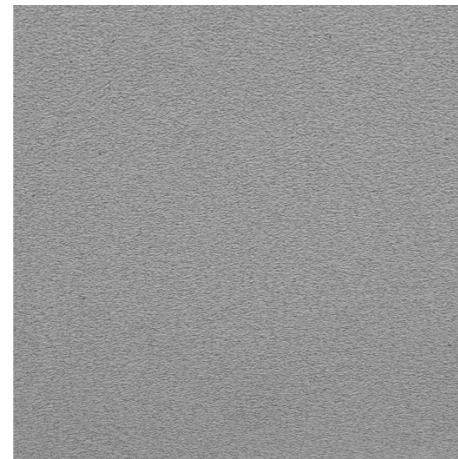
Size : 60x60 cms

Thickness : 1.5 cm

Finish : Matt



Volcano Grey



Volcano S&P Grey



Volcano Teracota



MAXGRIP R11 - 60X60 CM

Sr. No.	Test Description	IS - 4457:2007	IS - 15622:2017 Group B1b	Endura Maxgrip 60x60 cm - R11	Test Method
A) Dimension Quality					
1	Deviation in Length & Width	±0.6%	±0.1%	±0.1%	IS 4457:2007 Annex B / IS 13630-1
2	Deviation in Thickness	±5%	±5%	±4%	
3	Straightness of Sides	±0.2%	±0.1%	±0.1%	
4	Rectangularity	±0.2%	±0.1%	±0.1%	
5	Surface Flatness	±0.3%	±0.5%	±0.3%	
6	Surface Quality	Min 95%	Min 95%	Min 95%	
B) Physical Properties					
1	Water Absorption	<0.5%	0.08<E3	<0.5%	IS 4457:2007 Annex C / IS 13630-2
2	a) Scratch hardness of surface (Moh's scale) - Unglazed tile	-	≥5	>7	IS 13630 part 13
	b) Scratch hardness of surface (Moh's scale) - Glazed tile	-	≥5	≥6	
3	Flexural Strength (Average MOR)	>35N/mm ²	>30N/mm ²	>35N/mm ²	IS 4457:2007 Annex D / IS 13630-6
4	Breaking Strength	≥1300N	≥1100N	≥5500 N	IS 4457:2007 Annex D / IS 13630-6
5	Impact Resistance		≥0.55	≥0.55	IS 13630 -14
6	Deep Abrasion resistance (Unglazed tile)	<175mm ³	<175mm ³	<120 mm ³	S 4457:2007 Annex E / IS 13630-12
7	Resistance to Surface Abrasion of Glazed Tiles for Floor Application	-	Class II, Min	Min PEI IV - V	IS 13630 - 11
# Anti-Slip Properties					
8	a) Ramp Test @ Value)	-	-	R11	DIN 51130
	b) Barefeet on Wet Area (A/B/C) Scale	-	-	B	DIN 51097
9	Frost Resistance	-	Manufacture to declare	No damage	IS 13630-10
10	Density (gm/cc)	-	≥2	>2.2	IS 13630 part 2
11	Moisture Expansion	Manufacturer to declare	-	≤0.3 mm/m	IS 13630-part 3
12	Color Resistance to UV Light	-	-	No change in color	DIN 51094
C) Chemical Properties					
Resistance to Chemicals					
1	a) Resistance to Low Concentrations of Acids & Alkalies	Manufacturer to declare	Manufacturer to declare	ULB /GLB	ISO 10545-13
	b) Resistance to High Concentrations of Acids & Alkalies	Manufacturer to declare	Manufacturer to declare	UHB/GHB	
	c) Resistance to Household Chemicals and Swimming Pool Salts	Manufacturer to declare	UB/GB	UB /GB	
2	Stain Resistance	-	Resistant	Resistant	ISO 10545-14
D) Thermal Properties					
1	Linear Thermal Expansion	-	≤7 x10 ⁻⁶ K ⁻¹	≤7 x10 ⁻⁶ K ⁻¹	IS 13630 part 4 / ISO 10545-8
2	Thermal Shock Resistance	-	10 cycle, Min	No damage	IS 13630 part 5 / ISO 10545-9

Ramp Test: Suitable for all kind of surfaces (Plain, structural, etc.)

MAXGRIP
30X30 CM

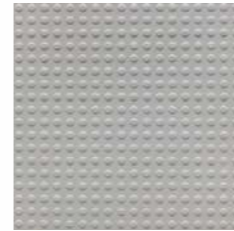
Compact format. Same grip and grit.

Series : Maxgrip - R11

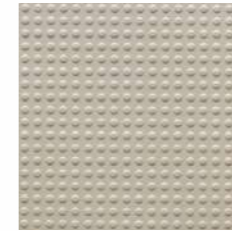
Size : 30x30 cms

Thickness : 10 mm

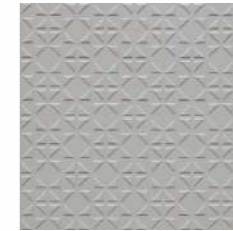
Finish : Matt



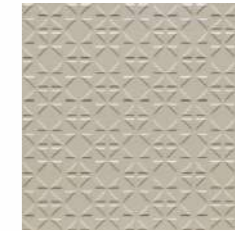
Max Cir Grey



Max Cir Ivory



Max Tri Grey



Max Tri Ivory



Max Cir Grey
Maxgrip R11



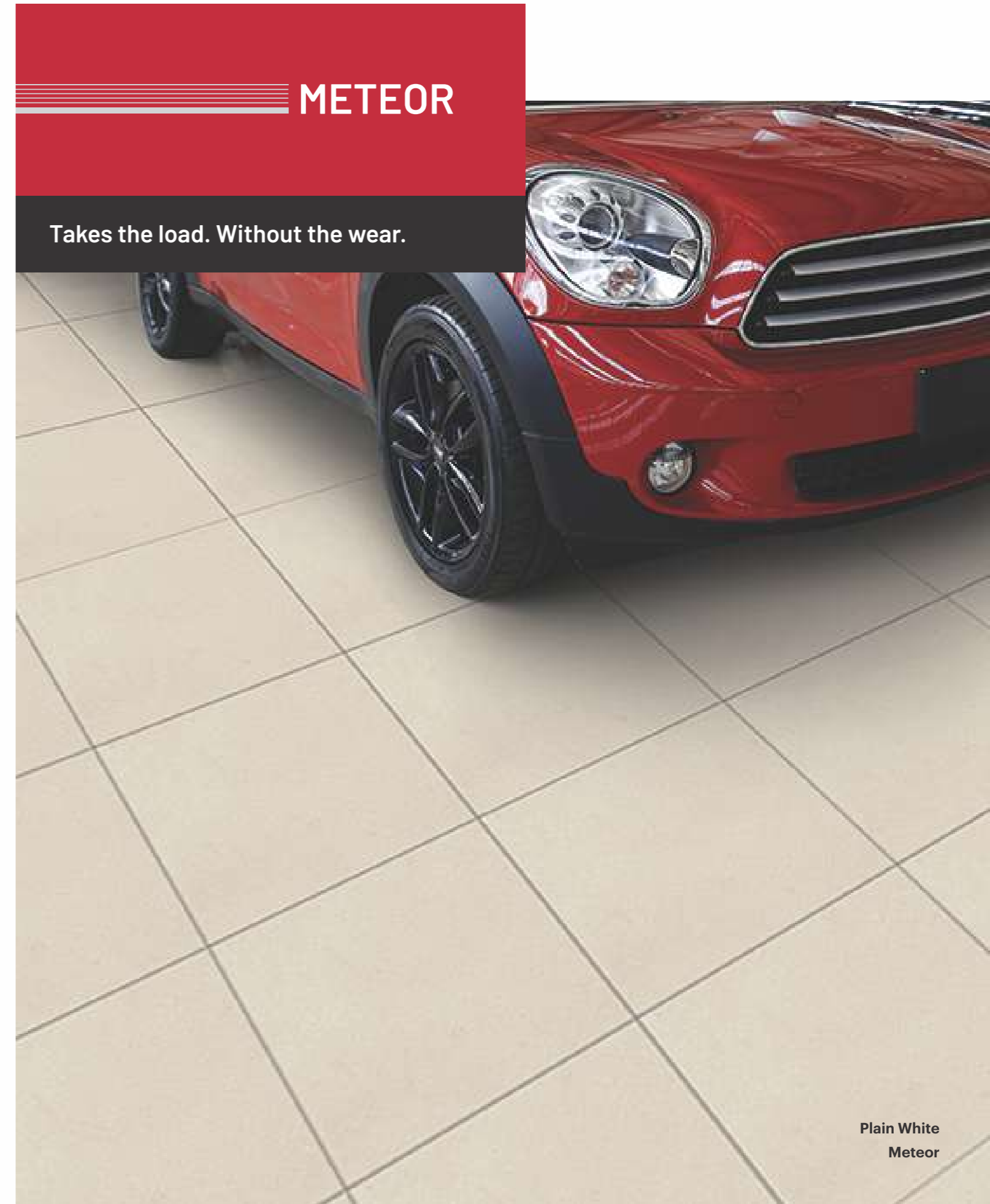
Max Cir Ivory
Maxgrip R11

MAXGRIP R11 - 30X30 CM

S. No.	Test Description	IS - 4457:2007	IS - 15622:2017 Group Blb	Endura Maxgrip 30x30 cm - 10 mm	Test Method
A) Dimension Quality					
1	Deviation in Length & Width	±0.6%	±0.1%	±0.1%	IS 4457:2007 Annex B / IS 13630-1
2	Deviation in Thickness	±5%	±5%	±4%	
3	Straightness of Sides	±0.2%	±0.1%	±0.1%	
4	Rectangularity	±0.2%	±0.1%	±0.1%	
5	Surface Flatness	±0.3%	±0.5%	±0.3%	
6	Surface Quality	Min 95%	Min 95%	Min 95%	
B) Physical Properties					
1	Water Absorption	<0.5%	0.08<E<3	<0.5%	IS 4457:2007 Annex C / IS 13630-2
2	A) Scratch Hardness of Surface (Moh's scale) - Unglazed tile	-	≥5	≥7	IS 13630 part 13
	B) Scratch Hardness of Surface (Moh's scale) - Glazed tile	-	≥5	≥6	
3	Flexural Strength (Average MOR)	>35N/mm ²	>30N/mm ²	>35N/mm ²	IS 4457:2007 Annex D / IS 13630-6
4	Breaking Strength	≥1300N	≥1100N	≥1800 N	IS 4457:2007 Annex D / IS 13630-6
5	Impact Resistance	-	≥0.55	≥0.55	IS 13630 -14
6	Deep Abrasion Resistance (Unglazed Tile)	<175mm ³	<175mm ³	<120 mm ³	S 4457:2007 Annex E / IS 13630-12
7	Resistance to Surface Abrasion of Glazed Tiles for Floor Application	-	Class II, Min	Min PEI IV - V	IS 13630 - 11
# Anti-Slip Properties					
8	a) Ramp Test @ Value	-	-	R10/ R11/ R12	DIN 51130
	b) Barefeet on Wet Area (A/B/C) Scale	-	-	A/B/C	DIN 51097
9	Frost Resistance	-	Manufacture to declare	No damage	IS 13630-10
10	Density, in (gm/cc)	-	≥2	>2.2	IS 13630 part 2
11	Moisture Expansion	Manufacturer to declare	Max 0.02 mm/m	Max 0.02 mm/m	IS 13630-part 3
12	Color Resistance to UV Light	-	-	No change in color	DIN 51094
C) Chemical Properties					
1	Resistance to Chemicals				ISO 10545-13
	a) Resistance to Low Concentrations of Acids 6 Alkalies	Manufacturer to declare	Manufacturer to declare	ULB /GLB	
	b) Resistance to High Concentrations of Acids 6 Alkalies	Manufacturer to declare	Manufacturer to declare	UHB/GHB	
	c) Resistance to Household Chemicals and Swimming Pool Salts	Manufacturer to declare	UB/GB	UB /GB	
2	Stain Resistance		Resistant	Resistant	ISO 10545-14
D) Thermal Properties					
1	Linear Thermal Expansion	-	≤7 x10 ⁻⁶ K ⁻¹	≤7 x10 ⁻⁶ K ⁻¹	IS 13630 part 4 / ISO 10545-8
2	Thermal Shock Resistance	-	10 cycle, Min	No damage	IS 13630 part 5 / ISO 10545-9

Ramp Test: Suitable for all kind of surfaces (Plain, structural, etc.)

Slider (BOT-3000E Digital Tribometer): Suitable for plain / smooth surface and not working for structural / profiled surface



Plain White
Meteor

Series : Meteor Series

Size : 60x60 cms

Thickness : 1.5 cm

Finish : Matt



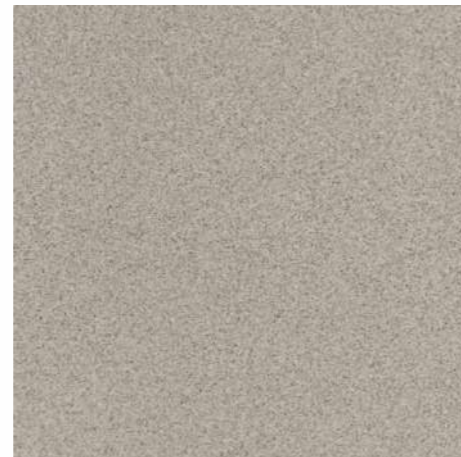
Coated Grey Plus



Ivory



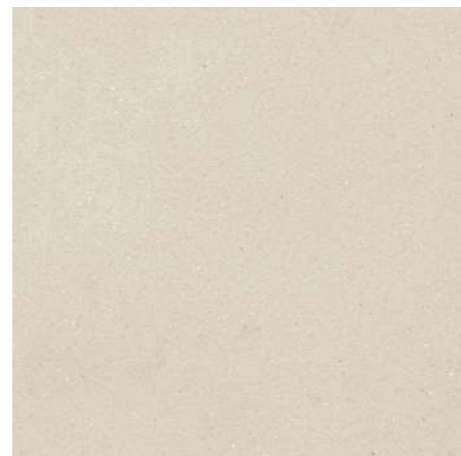
Plain Benaolim



Plain Donapaula



Plain Grey



Plain White



Series : Meteor Series

Size : 60x60 cms

Thickness : 1.5 cm

Finish : Matt



Slate Bianco



Slate Kota green



Terracotta



Triumph Grey





Korneto Ivory
Meteor

Series : Meteor Series

Size : 60x60 cms

Thickness : 2 cm

Finish : Matt



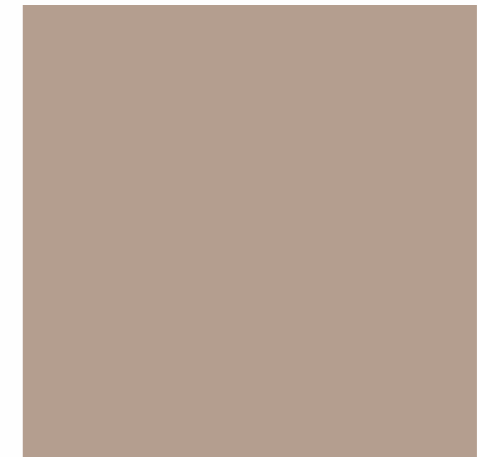
Korneto Beige #



Korneto Gris #



Korneto Ivory



Kreo Beige



Kreo Gris



Kreo Ivory

Series : Meteor Series

Size : 60x60 cms

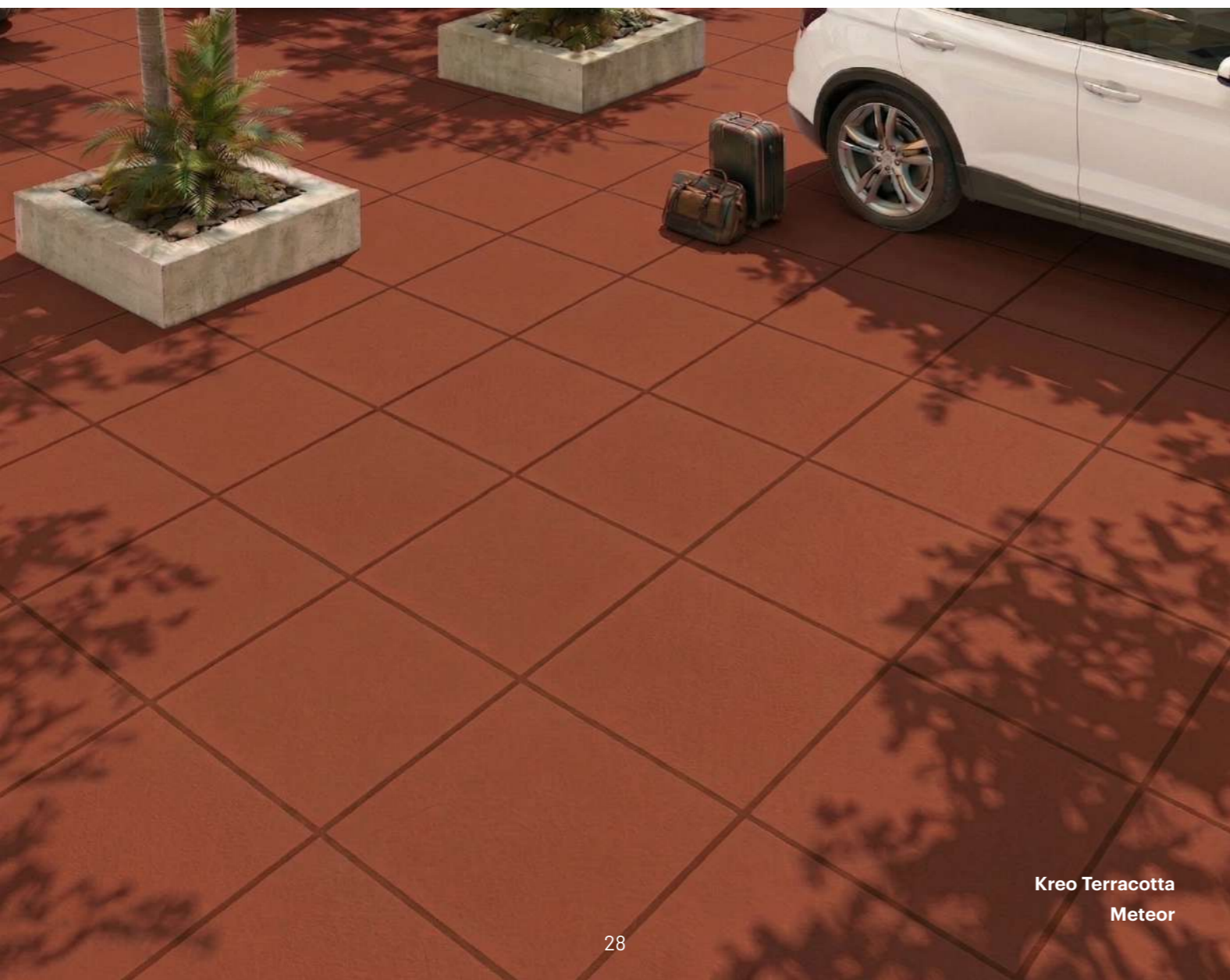
Thickness : 2 cm

Finish : Matt

METEOR



Kreo Terracotta



Kreo Terracotta
Meteor

S. No.	Test Description	ISO 13006:2018 / EN 14411 Group Bla Requirement	IS - 15622:2017 Group B1b	Johnson Endura Meteor		Test Method
				1.5 cm	2.0 cm	
A) Dimension Quality						
		Whichever is less applicable. Rectified	Rectified			
1	Deviation in Length & Width	± 0.3% or ±1.0mm	±0.1%	±0.1%	±0.1%	ISO 10545-2 / IS 13630-1
2	Deviation in Thickness	± 5% or ± 0.5mm	±5%	±4%	±4%	
3	Straightness of Sides	± 0.3% or ±0.8mm	±0.1%	±0.1%	±0.1%	
4	Rectangularity	± 0.3% or ± 1.5mm	±0.1%	±0.1%	±0.1%	
5	Surface Flatness	± 0.4% or ±1.8mm	±0.5%	±0.3%	±0.3%	
6	Surface Quality	Min 95%	Min 95%	Min 95%	Min 95%	
B) Physical Properties						
1	Water Absorption	≤ 0.5%, individual Max 0.6%	0.08%<E≤3	≤0.5%	≤0.5%	ISO 10545-3 / IS 13630-2
2	Scratch Hardness of Surface (Moh's scale)	-	≥5	>6	>6	IS 13630 part 13
3	Flexural Strength (Average MOR)	≥35 N/mm ² , Individual 32N/mm ² , Min	≥30N/mm ² , Individual 27 min	>38N/mm ²	>38N/mm ²	ISO 10545-4 / IS 13630-6
4	Breaking Strength	≥1300 N	≥1100 N	>5500 N	>8000 N	
5	Impact Resistance	Report value	≥0.55	≥0.55	≥0.55	ISO 10545-5 / IS 13630-14
6	Surface Abrasion Resistance (PEI Rating) Glazed	Report cycle	Class II, Min	Min PEI IV - V	Min PEI IV - V	ISO 10545-7 / IS 13630 - 11
7	Deep Abrasion Resistance (Ungalzed)	Report abrasion class	<175mm ³	<120mm ³	<120mm ³	ISO 10545- 6 / IS 13630-12
# Skid Resistance						
8	a) Skid Resistance - Ramp Test	Manufacturer to declare	Manufacturer to declare	>R9	>R9	DIN 51130
	b) Coefficient of Friction	Manufacturer to declare	Manufacturer to declare	>0.42	>0.42	ISO 10545 -17 /ANSI A 326.3
9	Bulk Density, in (g/cc)	≥2.0	≥2.0	>2.2	>2.2	ASTM C373-16 / IS 13630-2
10	Moisture Expansion	Manufacturer to declare	Max 0.02 mm/m	≤0.02 mm/m	≤0.02 mm/m	IS 13630-part 3 /ISO 10545-10
11	Frost Resistance	Manufacturer to declare	Manufacturer to declare	No damage	No damage	ISO 10545-12 / IS 13630-10
12	Color Resistance to UV Light	Manufacturer to declare	report result	No change in color	No change in color	DIN 51094
C) Chemical Properties						
1	Resistance to Concentrated HNO ₃ & H ₂ SO ₄ Acid (wt. Loss)	-	<1.5 %	<0.8%	<0.8 %	IS 4457:2007 Annex G
Resistance to Chemicals						
2	a) Resistance to Low concentrations of acids & alkalis	Manufacturer to declare	Manufacturer to declare	ULA/GLA	ULA/GLA	ISO 10545-13 / IS 13630-8
	b) Resistance to High concentrations of acids & alkalis	Manufacturer to declare	Manufacturer to declare	UHA/GHA	UHA/GHA	
	c) Resistance to household chemicals and swimming pool salts	Min B	AA min	B(ISO)/AA (IS)	B(ISO)/AA(IS)	
3	Stain Resistance	Min Class 3	Class 1 min	Class 3 (ISO)/ Class 1 (IS)	Class 3 (ISO)/ Class 1 (IS)	ISO 10545-14 / IS 13630-8
D) Thermal Properties						
1	Linear Thermal Expansion	Report value	≤7x10 ⁻⁶ K ⁻¹	≤7 x 10 ⁻⁶ K ⁻¹	≤7 x 10 ⁻⁶ K ⁻¹	ISO 10545-8 / IS 13630 -4
2	Thermal Shock Resistance	-	10 Cycle, Min	No damage	No damage	ISO 10545-9 / IS 13630 -5

Ramp Test: Suitable for all kind of surfaces (Plain, structural..etc)

Slider (BOT -3000E Digital Tribometer): Suitable for plain / smooth surface and not working for structural / profiled surface

SANDEX
NEUTRAL MATT

Blends in with the best.
Holds up like the rest.



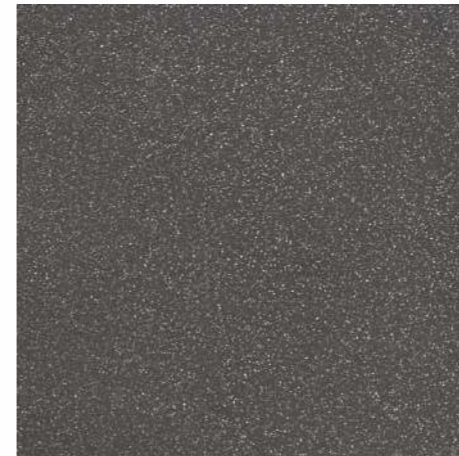
Grey
Sandex

Series : Sandex

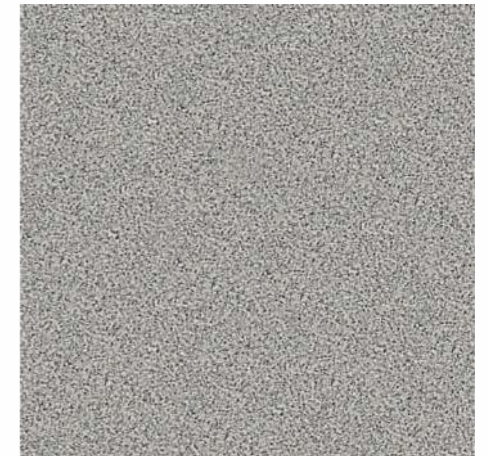
Size : 60x60 cms

Thickness : 1 cm

Finish : Matt



Benaulim



Donapuala



Gmalo



Grey



Grey Coated



Ivory



Series : Sandex

Size : 60x60 cms

Thickness : 1 cm

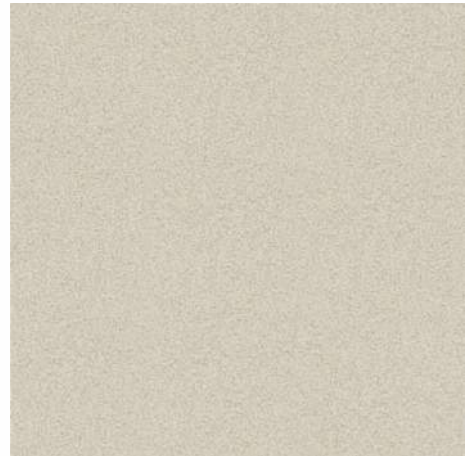
Finish : Matt



Ivory Coated



Majorda



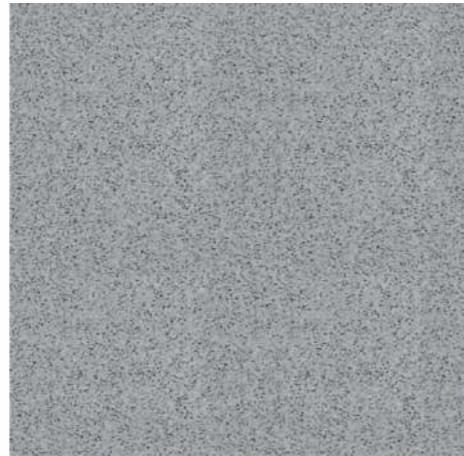
Miramar



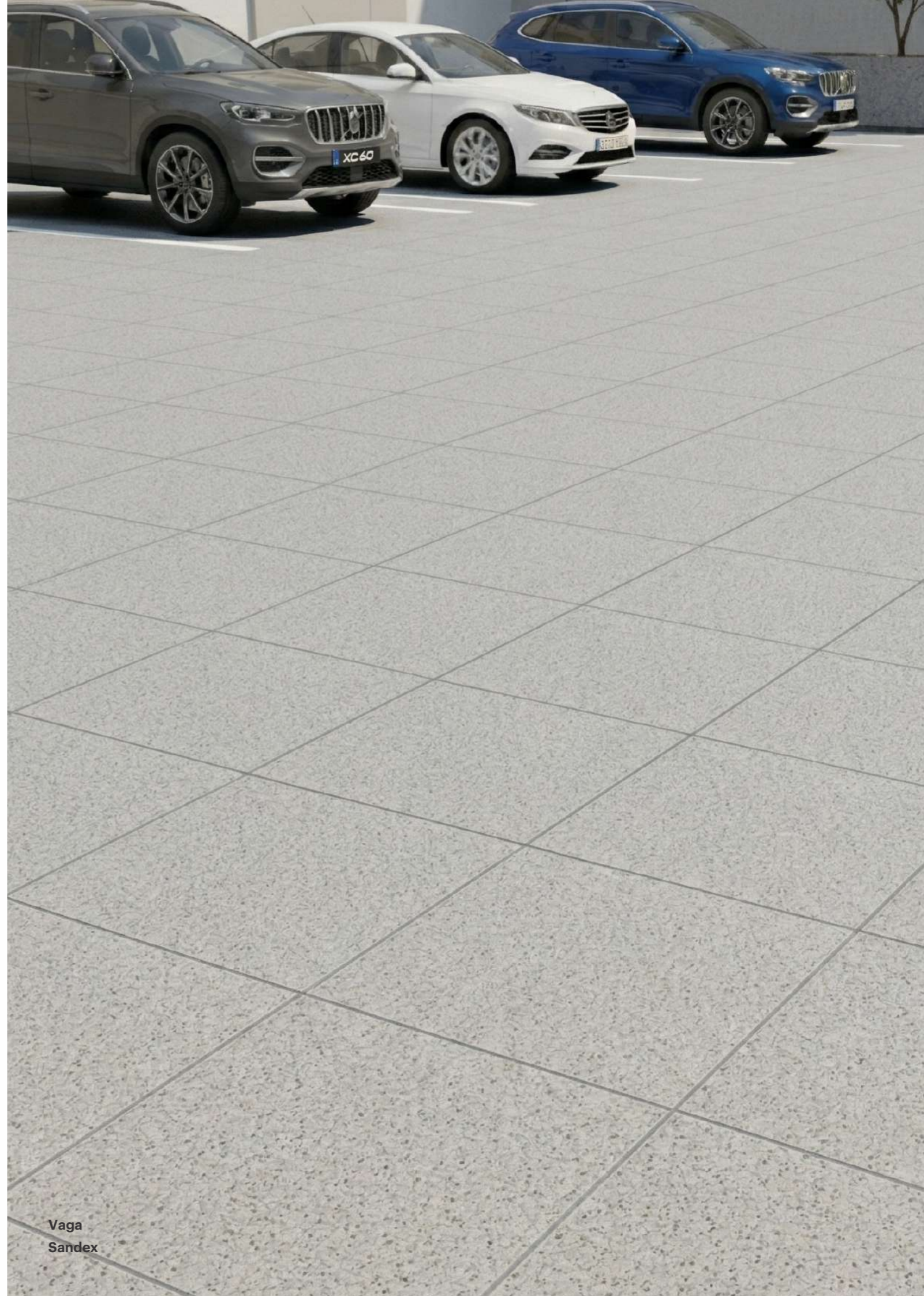
Tempered Grey



Terracotta



Vaga



Vaga
Sandex

SANDEX

S. No.	Property	I.S. 15622:2017 Group B1a Requirement	Hi-Traffic Sandex Series	Test Method
A) Dimensions & Surface Quality				
1	Deviation in Length & Width	± 0.1 %	± 0.1 %	IS 13630-1
2	Deviation in Thickness	± 5 %	± 4 %	
3	Straightness of Sides	± 0.1 %	± 0.1 %	
4	Rectangularity	± 0.1 %	± 0.1 %	
5	Surface Flatness	± 0.5 %	± 0.2 %	
6	Surface Quality	Min 95% free from visible defects	>95% free from visible defects	
B) Physical Property				
1	Water Absorption	Average ≤0.08, Individual 0.1%, Max	≤0.05%	IS 13630- 2
2	Modulus of Rupture	Average 35N/mm ² , Individual 32N/mm ² , Min	≥38 N/mm ²	IS 13630-6
3	Breaking Strength	1300N Min for thickness ≥ 7.5 mm	≥2000 N	
4	Moisture Expansion	0.02 mm/m, Max	≤0.02 mm/m	IS 13630-3
5	Scratch Hardness of Surface (Moh's scale)	5, Min	≥7	IS 13630 -13
6	Deep Abrasion Resistance (Unglazed tile)	<140mm ³	<120 mm ³	IS 13630-12
7	Resistance to Surface Abrasion of Glazed Tiles for Floor Application	Class II, Min	PEI III-IV	IS 13630 -11
8	Impact Resistance	0.55, Min	≥0.55	IS 13630-14
10	# Skid Resistance			
	a) Skid Resistance - Ramp Test	Manufacturer to declare	>R9	DIN 51130
	b) Coefficient of Friction	Manufacturer to declare	>0.42	ISO 10545 -17 /ANSI A 326.3
11	Frost Resistance	Required if requested by purchaser	No damage	IS 13630-10
12	Bulk Density (g/cc)	2.2, Min	≥2.2	ASTM C373-16 / IS 13630-2
13	Color Resistance to UV Light	-	No change in color	DIN 51094
C) Chemical Properties				
1	Resistance to Concentrated HNO ₃ & H ₂ SO ₄ Acid (wt. Loss)	<1.5 %	<0.8 %	IS 4457:2007 Annex G
	Resistance to Chemicals			IS 13630 -8/7
2	a) Resistance to Low concentrations of acids & alkalies	Manufacturer to declare	AA/ULA	
	b) Resistance to High concentrations of acids & alkalies	Manufacturer to declare	AA/UHA	
	c) Resistance to household chemicals and swimming pool salts	AA min	AA min	
3	Stain Resistance	Glazed tile- Class 1 min, Unglazed tile -Class 2 min	Glazed tile- Class 1 min, Unglazed tile -Class 2 min	IS 13630 -8/7
D) Thermal Properties				
1	Coefficient of Linear Thermal Expansion	Max, 6 x 10 ⁻⁶ K ⁻¹	≤6 x 10 ⁻⁶ K ⁻¹	IS 13630-4
2	Thermal Shock Resistance	10 cycles Min	No Damage	IS 13630 -5

Ramp Test: Suitable for all kind of surfaces (Plain, structural..etc)

Slider (BOT -3000E Digital Tribometer): Suitable for plain / smooth surface and not working for structural / profiled surface




Series : EDC

Size : 40x40 cms

Finish : Matt

Series : EDC

Size : 40x40 cms

Finish : Matt



Andre Brown Plus K



Arch Stone Natura Plus K



Arch Stone Wood Plus K



Cedric Beige Plus R



Cedric Grey Plus R



Cedric Silver Plus R



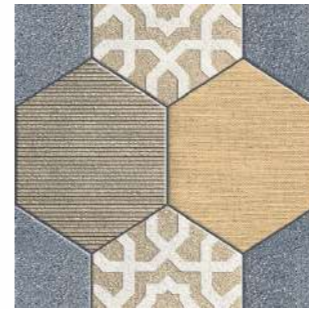
Aric Brown Plus R



Balsa Brown Plus R



Balsa Wood Plus K



Charm Decor Plus R



Clad Care Cotto Plus K



Classico Peach Plus R



Bradley Silver Plus K



Brick Grey Plus R



Brick Ivory Plus R



Cliff Bronze Plus R



Cliff Crema Plus R



Cliff Grey Plus R



Brick Natural Plus R



Bruno Wood Plus K



Burns Grey Plus R



Contour Blue Plus R



Cosmo Black Plus K



Cosmo Cotto Plus K

Series : EDC

Size : 40x40 cms

Finish : Matt



Cosmos Mix Plus [K]



Cresta Mixstone Plus [R]



Cross Ice Plus [K]



Crystal Grey Plus [R]



Crystal Silver Plus [R]



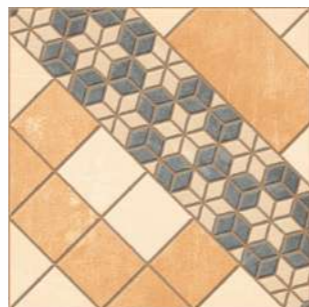
Crystal Stone Natura Plus [R]



Crystal Stone Slate Plus [R]



Cubic Grass Plus [K]



Cubix Cotto Plus [R]



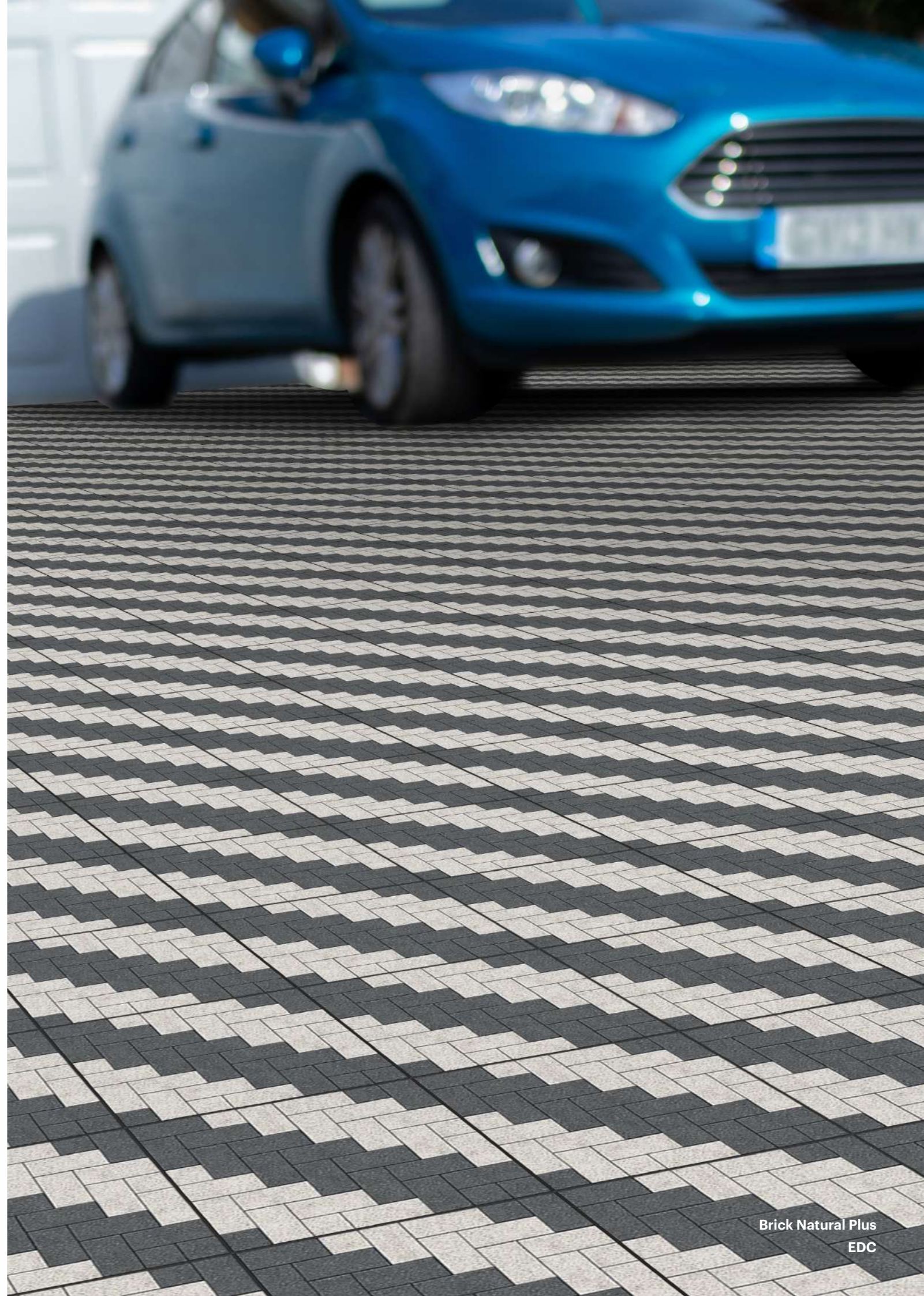
Cubix Grey Brown Plus [R]



Drift Bruno Plus [K]



Drift Grey Plus [K]



Brick Natural Plus
EDC

Series : EDC

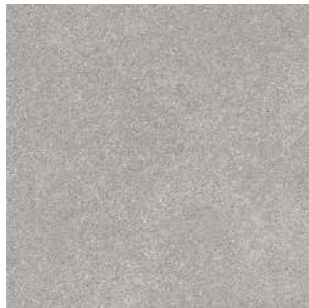
Size : 40x40 cms

Finish : Matt

Series : EDC

Size : 40x40 cms

Finish : Matt



Earthen Grey Plus R



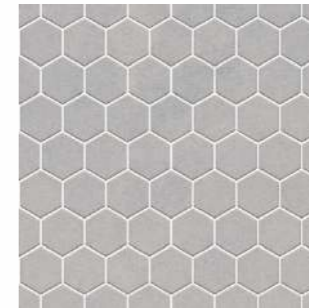
Earthen Slate Plus R



Ethan Mix Plus R



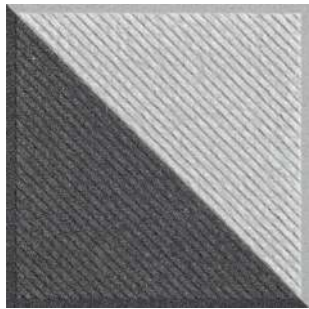
Honeycomb Russet Plus R



Honeycomb Silver Plus R



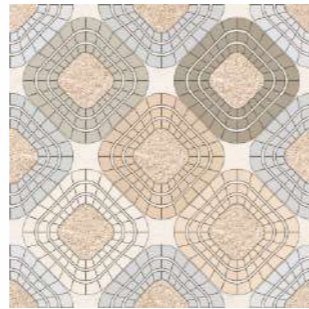
Jezza Bronze Plus R/K



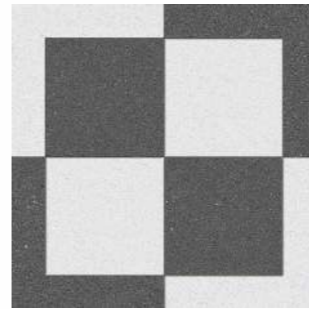
Genex DK Grey Plus R



Geo Matrix Grey Plus R



Ground Stone Plus R/K



Jezza Grey Plus R/K



Joel Beige Plus R



Joel Bianco Plus R



Ground Stone Grey Plus R/K



Hexa Cotto Plus K



Hexa Grey Plus R/K



Julyan Brown Plus R



Karpet Azul Plus K



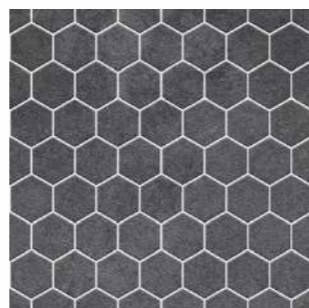
Karpet Grideco Plus K



Hexa Mix Plus R/K



Hexo White Plus R



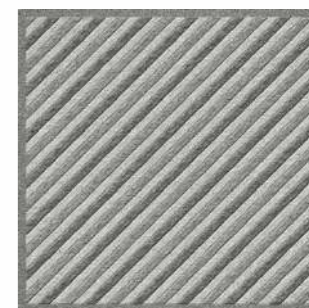
Honeycomb Grey Plus R



Kite Cotto Plus R



Linear Beige Plus R



Liner Grey Plus R

Series : EDC

Size : 40x40 cms

Finish : Matt



Maze Grey Plus K



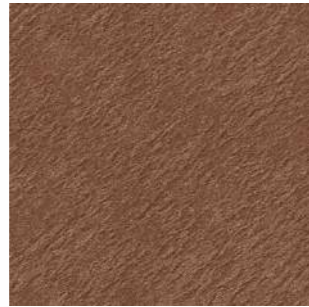
Maze Mix Plus R/K



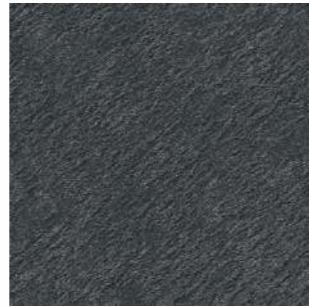
Maze Wood Plus K



Mica Beige Plus R/K



Mica Bronze Plus K



Mica Nero Plus R



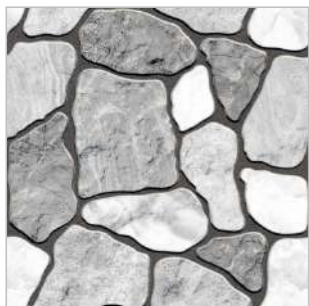
Mica Slate Plus K



Midway Grey Plus K



New Wood Beige Plus K



Nilestone Grey Plus K



Pattaron Cotto Plus R



Paviz Beige Plus R



Ground Stone Grey Plus
EDC

Series : EDC

Size : 40x40 cms

Finish : Matt

Series : EDC

Size : 40x40 cms

Finish : Matt



Paviz Brown Plus [R]



Pebble Nero Plus [K]



Pebble Ntato [R]



Savio Leaf Gris Plus [K]



Savio Leaf Pistachio Plus [K]



Silva Copper Plus [K]



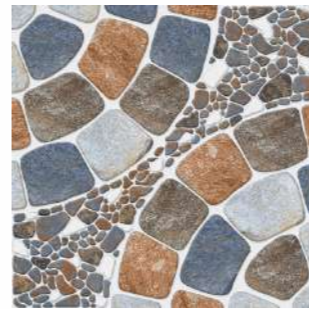
Pebble Ntato Plus [K]



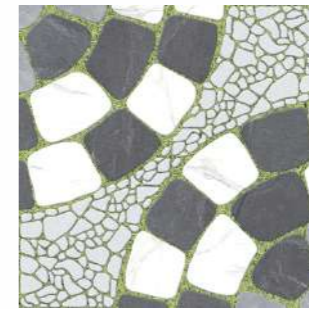
Pebbles Coffee Plus [K]



Rangoli Mason Camel Plus [K]



Snydar Mix [R]



Snydar Nero [R]



Stone Cotto Plus [K]



Retro Decor [R]



Retro Grass [R]



Retro Gris [R]



Stone Crema Plus [K]



Stone Grey Plus [K]



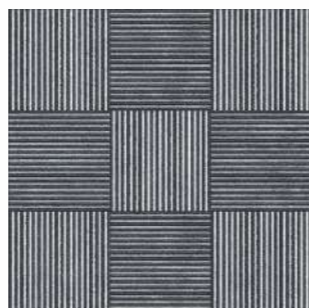
Stone Nero Plus [K]



Rug Mix Plus [K]



Rug Silver Plus [K]



Safary Grey [K]



Strip Sandune Plus [K]



Synergy Grey Plus [R]

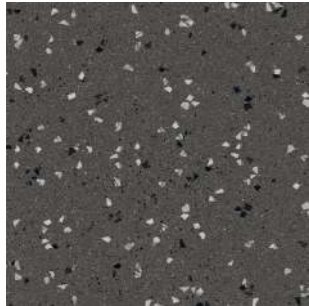


Tagus Pearl Plus [R]

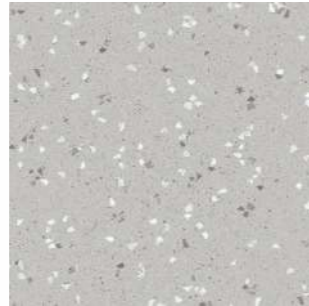
Series : EDC

Size : 40x40 cms

Finish : Matt



Terrazzo Black Plus R



Terrazzo Grey Plus R



Texture Mix Plus K



Texture Wood Plus K



Tito Dot Black Plus R



Tito Dot Chocho Plus K



Velbone Wood Plus R



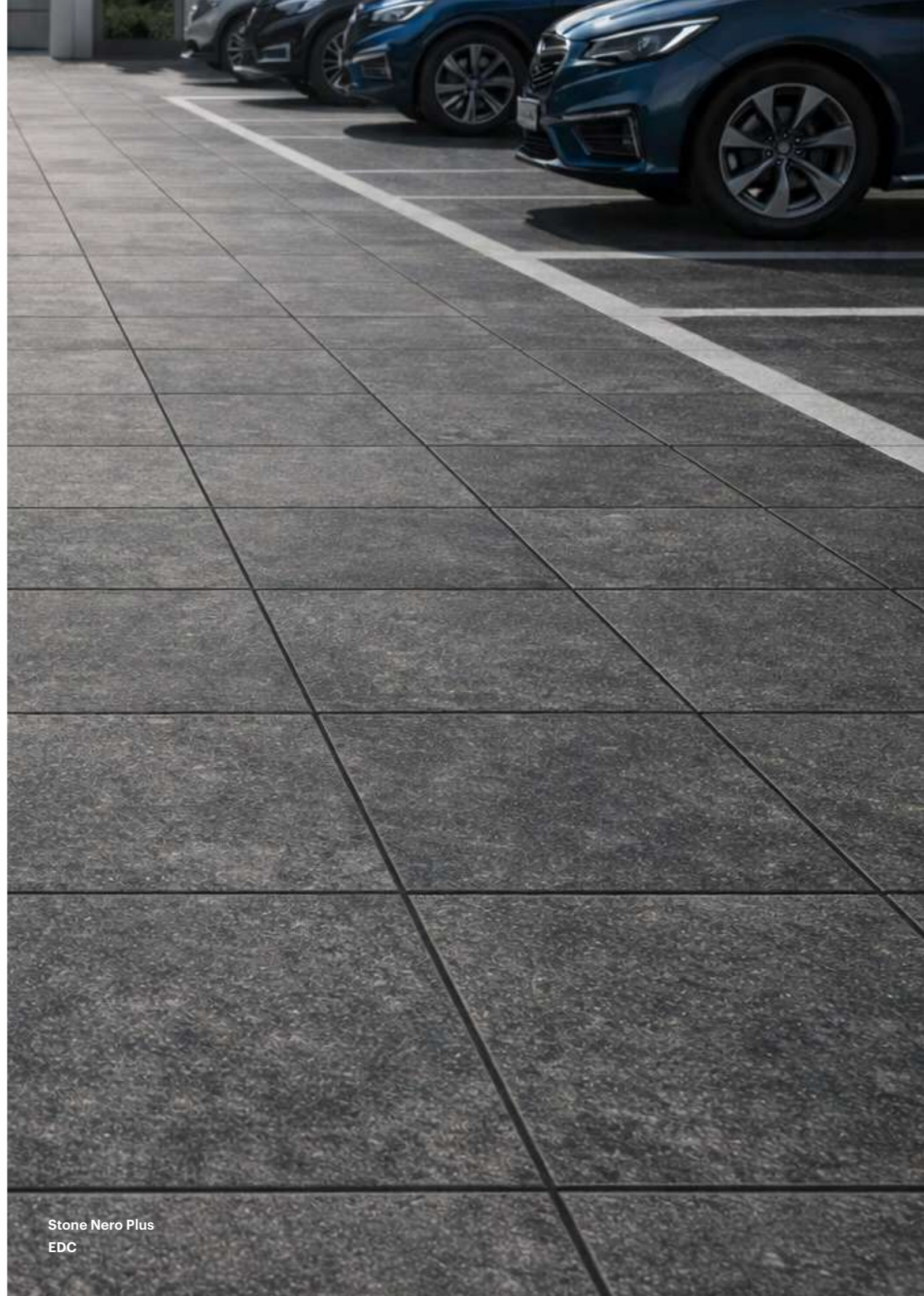
Wallin Brown Plus R



Zane Grey Plus R



Noelwood Beige Plus R



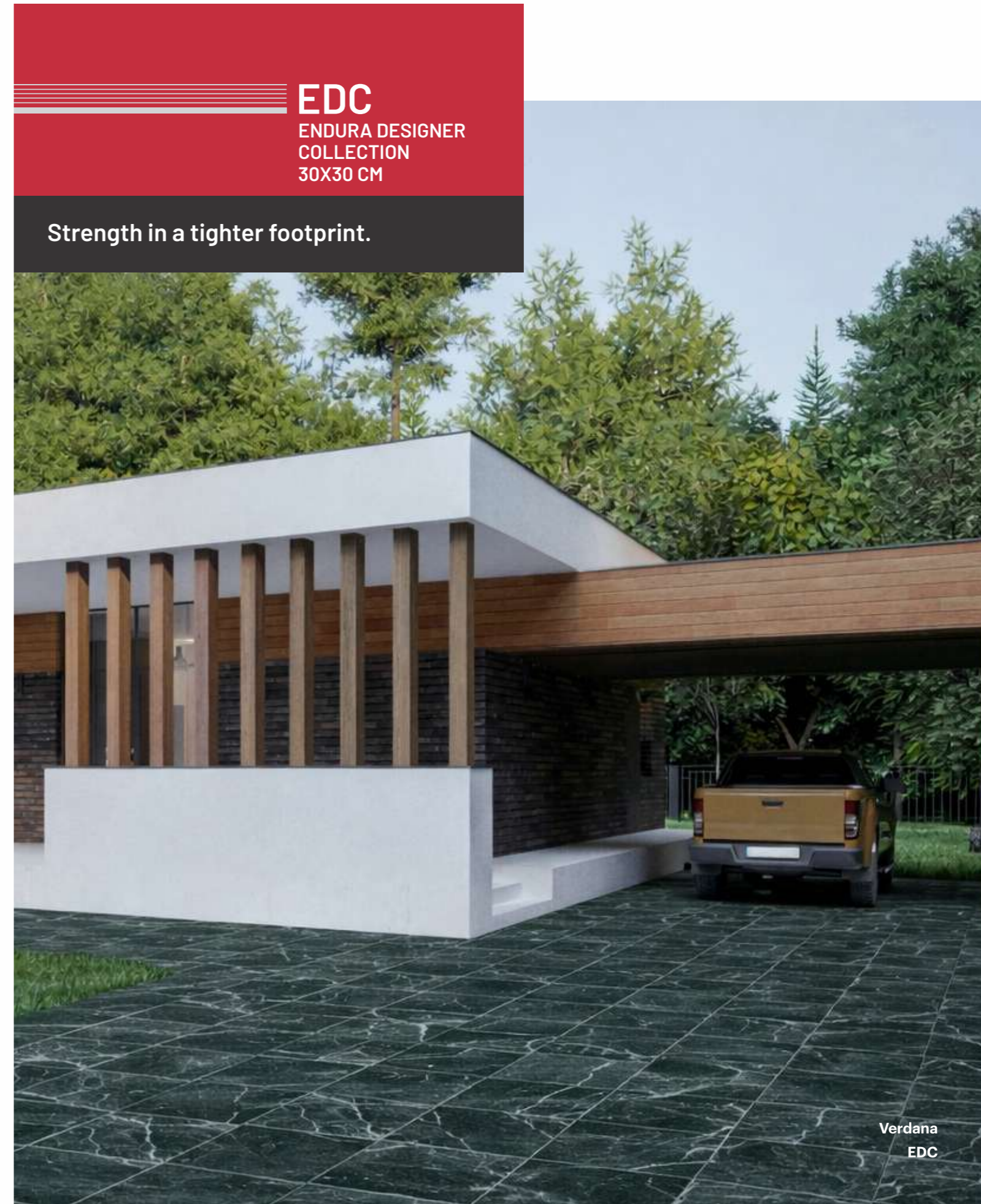
Stone Nero Plus
EDC

EDC 40X40 CM

S. No.	Test Description	ISO 13006:2018 / EN 14411 Group B1a Requirement	IS - 15622:2017 Group B1b	Johnson Endura EDC	Test Method
A) Dimension Quality		whichever is less applicable. Rectified	Rectified	40X40	
1	Deviation in Length & Width	± 0.3% or ±1.0mm	±0.1%	±0.1%	ISO 10545-2 / IS 13630-1
2	Deviation in Thickness	± 5% or ± 0.5mm	±5%	±4%	
3	Straightness of Sides	± 0.3% or ±0.8mm	±0.1%	±0.1%	
4	Rectangularity	± 0.3% or ± 1.5mm	±0.1%	±0.1%	
5	Surface Flatness	± 0.4% or ±1.8mm	±0.5%	±0.3%	
6	Surface Quality	Min 95%	Min 95%	Min 95%	
B) Physical Properties					
1	Water Absorption	≤0.5%, individual Max 0.6%	0.08%<E≤3, Individual 3.3 max	<0.5%	ISO 10545-3 /IS 13630-2
2	Scratch Hardness of Surface (Moh's scale)	–	≥5	≥6	IS 13630 part 13
3	Flexural Strength (Average MOR)	≥35N/mm ² , Individual 32N/mm ² , Min	≥30N/mm ² , Individual 27 min	>38N/mm ²	ISO 10545-4 / IS 13630-6
4	Breaking Strength	≥1300 N	≥1100 N	>1800 N	ISO 10545-4 / IS 13630-6
5	Impact Resistance	Report value	≥0.55	≥0.55	ISO 10545-5 / IS 13630-14
6	Crazing Resistance	Report cycle	4 cycle	No damage	ISO 10545-11 / IS 13630-9
7	Surface Abrasion Resistance (PEI Rating)	Report abrasion class	Class II, Min	Min PEI III - IV	ISO 10545-7 / IS 13630-11
8	Skid Resistance (Coefficient of Friction)	NA	Manufacturer to declare	0.3 to 0.5	ISO 10545-17 /ANSI A 326.3
9	Bulk Density, in (g/cc)	≥2.0	≥2.0	>2.2	ASTM C373-16 / IS 13630-2
10	Moisture Expansion	Manufacturer to declare	Max 0.02 mm/m	≤0.02 mm/m	IS 13630-part 3 / ISO 10545-10
11	Frost Resistance	Manufacturer to declare	Manufacturer to declare	No damage	ISO 10545-12 / IS 13630-10
12	Color Resistance to UV Light	Report result	Report result	No change in color	DIN 51094
C) Chemical Properties					
Resistance to Chemicals					
1	1) Resistance to Low concentrations of acids & alkalies	report resistance class	report resistance class	GLA	ISO 10545-13 / IS 13630-8
	2) Resistance to High concentrations of acids & alkalies	report resistance class	report resistance class	GHA	
	3) Resistance to household chemicals and swimming pool salts	Min B	AA min	B(ISO)/AA(BIS)	
2	Stain Resistance	Min Class 3	Class 1 min	Class 3 (ISO)/ Class 1 (IS)	ISO 10545-14 / IS 13630-8
D) Thermal Properties					
1	Linear Thermal Expansion	Report value	≤7x10 ⁻⁶ K ⁻¹	≤7x10 ⁻⁶ K ⁻¹	ISO 10545-8/ IS 13630-4
2	Thermal Shock Resistance	–	10 Cycle , Min	10 Cycle, Min	ISO 10545-9/ IS 13630-5

Ramp Test: Suitable for all kind of surfaces (Plain, structural..etc)

Slider (BOT -3000E Digital Tribometer): Suitable for plain / smooth surface and not working for structural / profiled surface



EDC
ENDURA DESIGNER
COLLECTION
30X30 CM

Strength in a tighter footprint.

Series : EDC

Size : 30x30 cms

Thickness : 1 cm

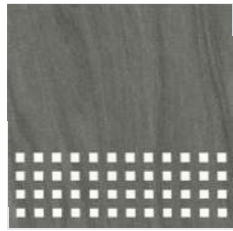
Finish : Matt

Series : EDC

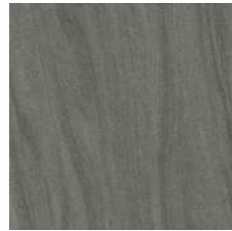
Size : 30x30 cms

Thickness : 1 cm

Finish : Matt



Alta Gris Cube Step [K]



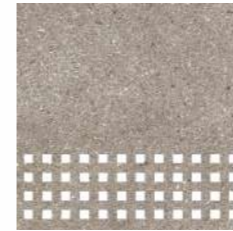
Alta Gris Plain [K]



Aeray Gris [K]



Blocks Gris [D/K]



Murano Cube Step [K]



Murano Plain [K]



Oak Cube Step [K]



Oak Plain [K]



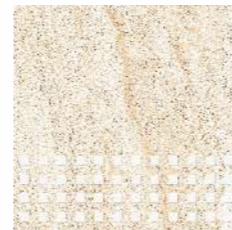
Cross Chalk [D/K]



Cross Nero [D]



Cross Ochare [D/K]



Dyna Cube Step [K]



Ocean Cube Step [K]



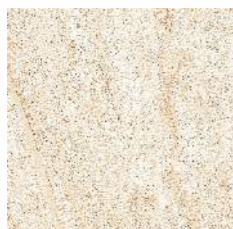
Ocean Plain [K]



Parx Gris [D/K]



Parx Rust [D/K]



Dyna Plain [K]



Floor Blocks Gris [K]



Floor Blocks Mix [K]



Flower Circle Gris [K]



Teak Cube Step [K]



Teak Plain [K]



Verdana Step Cube [K]



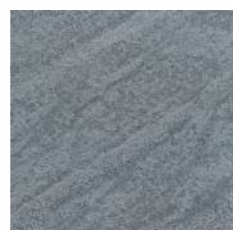
Verdana [K]



Geo Pebble Natura [D/K]



Lithic Gris [K]



Lithic Nero [K]



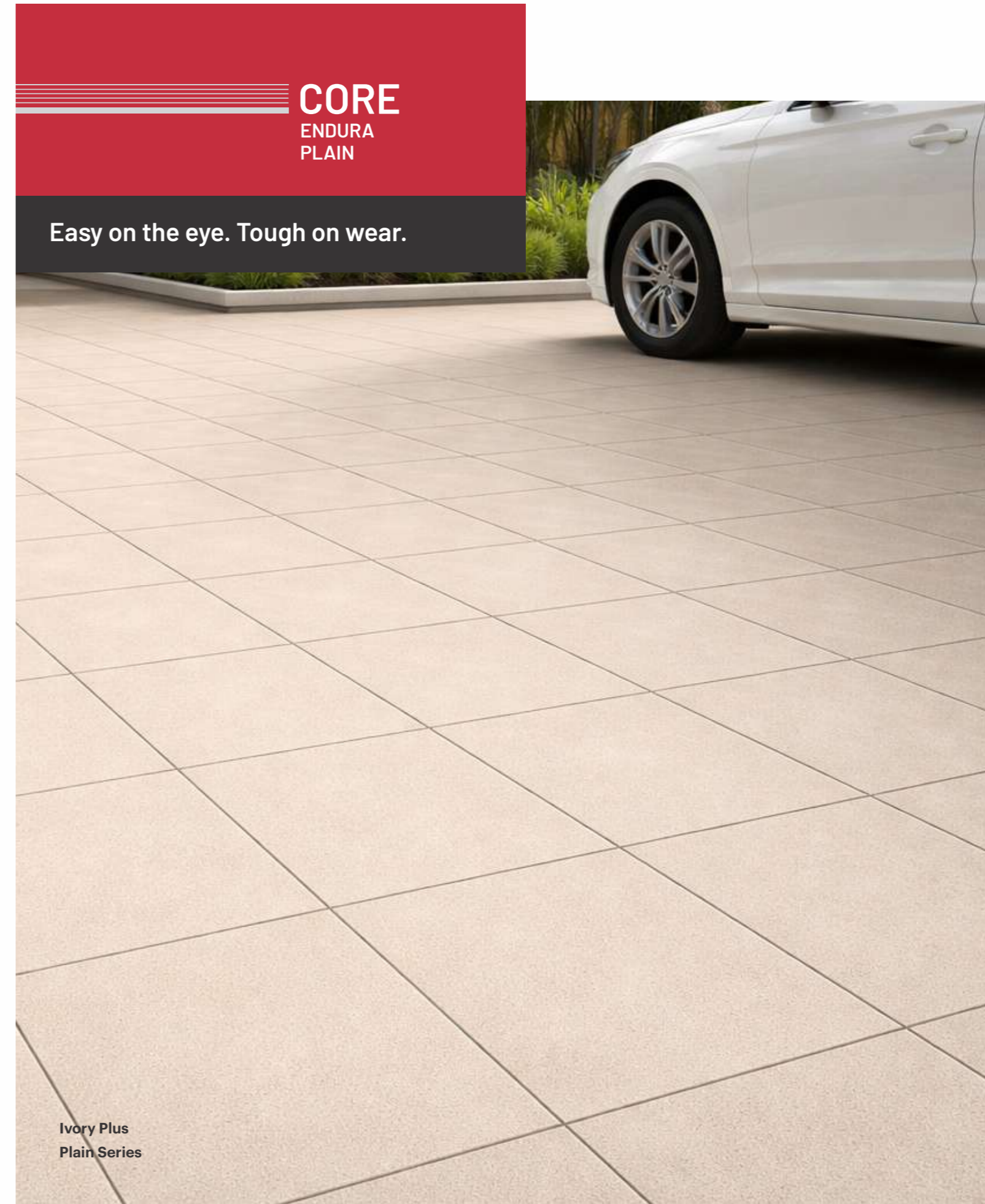
Mosiko Gris [D/K]

EDC 30X30 CM

S. No.	Test Description	ISO 13006:2018 / EN 14411 Group Bla Requirement	IS - 15622:2017 Group B1b	Johnson Endura EDC	Test Method
				30x30 cm - 1.0 cm	
A) Dimension Quality		whichever is less applicable. Rectified	Rectified		
1	Deviation in Length & Width	± 0.3% or ±1.0mm	±0.1%	±0.1%	ISO 10545-2 / IS 13630-1
2	Deviation in Thickness	± 5% or ± 0.5mm	±5%	±4%	
3	Straightness of Sides	± 0.3% or ±0.8mm	±0.1%	±0.1%	
4	Rectangularity	± 0.3% or ± 1.5mm	±0.1%	±0.1%	
5	Surface Flatness	± 0.4% or ±1.8mm	±0.5%	±0.3%	
6	Surface Quality	Min 95%	Min 95%	Min 95%	
B) Physical Properties					
1	Water Absorption	≤0.5%, individual Max 0.6%	0.08%<E≤3, Individual 3.3 max	≤0.5%	ISO 10545-3 / IS 13630-2
2	Scratch Hardness of Surface (Moh's scale)	–	≥5	≥6	IS 13630 part 13
3	Flexural Strength (Average MOR)	≥35N/mm ² , Individual 32N/mm ² , Min	≥30N/mm ² , Individual 27 min	>35N/mm ²	ISO 10545-4 / IS 13630-6
4	Breaking Strength	≥1300 N	≥1100 N	>1800 N	ISO 10545-4 / IS 13630-6
5	Impact Resistance	Report value	≥0.55	≥0.55	ISO 10545-5 / IS 13630-14
6	Crazing Resistance	Report cycle	4 cycle	No damage	ISO 10545-11 / IS 13630-9
7	Surface Abrasion Resistance (PEI Rating)	Report abrasion class	Class II, Min	Min PEI IV	ISO 10545-7 / IS 13630-11
8	# Skid Resistance				
	a) Skid Resistance - Ramp Test	Manufacturer to declare	Manufacturer to declare	≥R9	DIN 51130
	b) Coefficient of Friction	Manufacturer to declare	Manufacturer to declare	>0.42	ISO 10545 -17 /ANSI A 326.3
9	Bulk Density, in (g/cc)	≥2.0	≥2.0	>2.2	ASTM C373-16 / IS 13630-2
10	Moisture Expansion	Manufacturer to declare	Max 0.02 mm/m	≤0.02 mm/m	IS 13630-part 3 / ISO 10545-10
11	Frost Resistance	Manufacturer to declare	Manufacturer to declare	No damage	ISO 10545-12 / IS 13630-10
12	Color Resistance to UV Light	Report result	Report result	No change in color	DIN 51094
C) Chemical Properties					
	Resistance to Chemicals				ISO 10545-13 / IS 13630-8
1	1) Resistance to Low concentrations of acids & alkalies	report resistance class	report resistance class	GLA/AA	
	2) Resistance to High concentrations of acids & alkalies	report resistance class	report resistance class	GHA/AA	
	3) Resistance to household chemicals and swimming pool salts	GB min	AA min	GB(ISO)/AA(BIS)	
2	Stain Resistance	Min Class 3	Class 1 min	Resistant	ISO 10545-14 / IS 13630-8
D) Thermal Properties					
1	Linear Thermal Expansion	Report value	≤7x10 ⁻⁶ K ⁻¹	≤7x10 ⁻⁶ K ⁻¹	ISO 10545-8/ IS 13630-4
2	Thermal Shock Resistance	–	10 Cycle , Min	No damage	ISO 10545-9/ IS 13630-5

Ramp Test: Suitable for all kind of surfaces (Plain, structural..etc)

Slider (BOT -3000E Digital Tribometer): Suitable for plain / smooth surface and not working for structural / profiled surface



Series : Plain Series **Size : 30x30 cms** **Thickness : 1 cm** **Finish : Matt**



Terracotta Plus
Plain Series

CORE ENDURA PLAIN

S. No.	Test Description	I.S.- 4457:2007	IS - 15622:2017 Group B1b	Hi-Traffic	Test Method
A) Dimension Quality				30X30X1.0 cm	
1	Deviation in Length & Width (Rectified)	±0.5%	±0.1%	±0.1%	IS 4457:2007 Annex B / IS 13630-1
2	Deviation in Thickness	±5%	±5%	±4%	
3	Straightness of Sides (Rectified)	±0.2%	±0.1%	±0.1%	
4	Rectangularity (Rectified)	±0.2%	±0.1%	±0.1%	
5	Surface Flatness	±0.3%	±0.5%	±0.3%	
6	Surface Quality	Min 95%	Min 95%	Min 95%	
B) Physical Properties					
1	Water Absorption	<0.5%	0.08<E<3	<0.5%	IS 13630-2
2	a) Scratch hardness of surface (Moh's scale) - Unglazed tile	–	≥5	≥7	IS 13630 part 13
	b) Scratch hardness of surface (Moh's scale) - Glazed tile	–	≥5	≥6	
3	Flexural Strength (Average MOR)	>35N/mm ²	>30N/mm ²	>35N/mm ²	IS 13630 - 6
4	Breaking Strength	≥1300N	≥1100N	>1800 N	IS 13630 - 6
5	Impact Resistance	Manufacturer to declare	≥0.55	≥0.55	IS 13630 -14
6	Deep Abrasion resistance (Unglazed tile)	<175mm ³	<175mm ³	<120 mm ³	IS 13630 -12
7	Resistance to Surface Abrasion of Glazed Tiles for Floor Application	–	Class II, Min	Min PEI IV - V	IS 13630 - 11
# Skid Resistance					
8	a) Skid Resistance - Ramp Test	–	–	>R9	DIN 51130
	b) Coefficient of Friction	–	–	>0.42	ISO 10545 -17 / ANSI A 326.3
9	Frost Resistance	–	Manufacture to declare	No damage	IS 13630 -10
10	Density (gm/cc)	–	≥2	>2.2	IS 13630 part 2
11	Moisture Expansion	Manufacturer to declare	–	≤0.3 mm/m	IS 13630-part 3
12	Color Resistance to UV Light	–	–	No change in color	DIN 51094
C) Chemical Properties					
1	Resistance to Concentrated HNO ₃ & H ₂ SO ₄ Acid (wt. Loss)	<1.5 %	–	<0.8%	IS 4457:2007 Annex G
Resistance to Chemicals					
2	a) Resistance to Low concentrations of acids & alkalis	Manufacturer to declare	Manufacturer to declare	ULA/GLA	ISO 10545-13
	b) Resistance to High concentrations of acids & alkalis	Manufacturer to declare	Manufacturer to declare	UHA/GHA	
	c) Resistance to household chemicals and swimming pool salts	Manufacturer to declare	AA min	AA min	
3	Stain Resistance	–	Class 1 min	Class 1 min	IS 13630 part 8
D) Thermal Properties					
1	Linear Thermal Expansion	–	<7 x10 ⁻⁶ /K ¹	<7 x10 ⁻⁶ /K ¹	IS 13630 part 4 / ISO 10545-8
2	Thermal Shock Resistance	–	10 cycle, Min	No damage	IS 13630 part 5 / ISO 10545-9

Ramp Test: Suitable for all kind of surfaces (Plain, structural...etc)

Slider (BOT - 3000E Digital Tribometer): Suitable for plain / smooth surface and not working for structural / profiled surface

CORE
ENDURA
COLOUR SERIES

Aesthetic meets endurance.



Tata Blue
Colour Series

Series : Colour Series

Size : 30x30 cms

Thickness : 1 cm

Finish : Matt



Coated Black D



Coated Grey Plus D/K



Coated White D



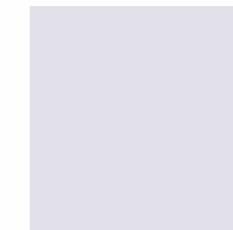
Green D/K



Red D



Tata Blue D/K



White Plus D



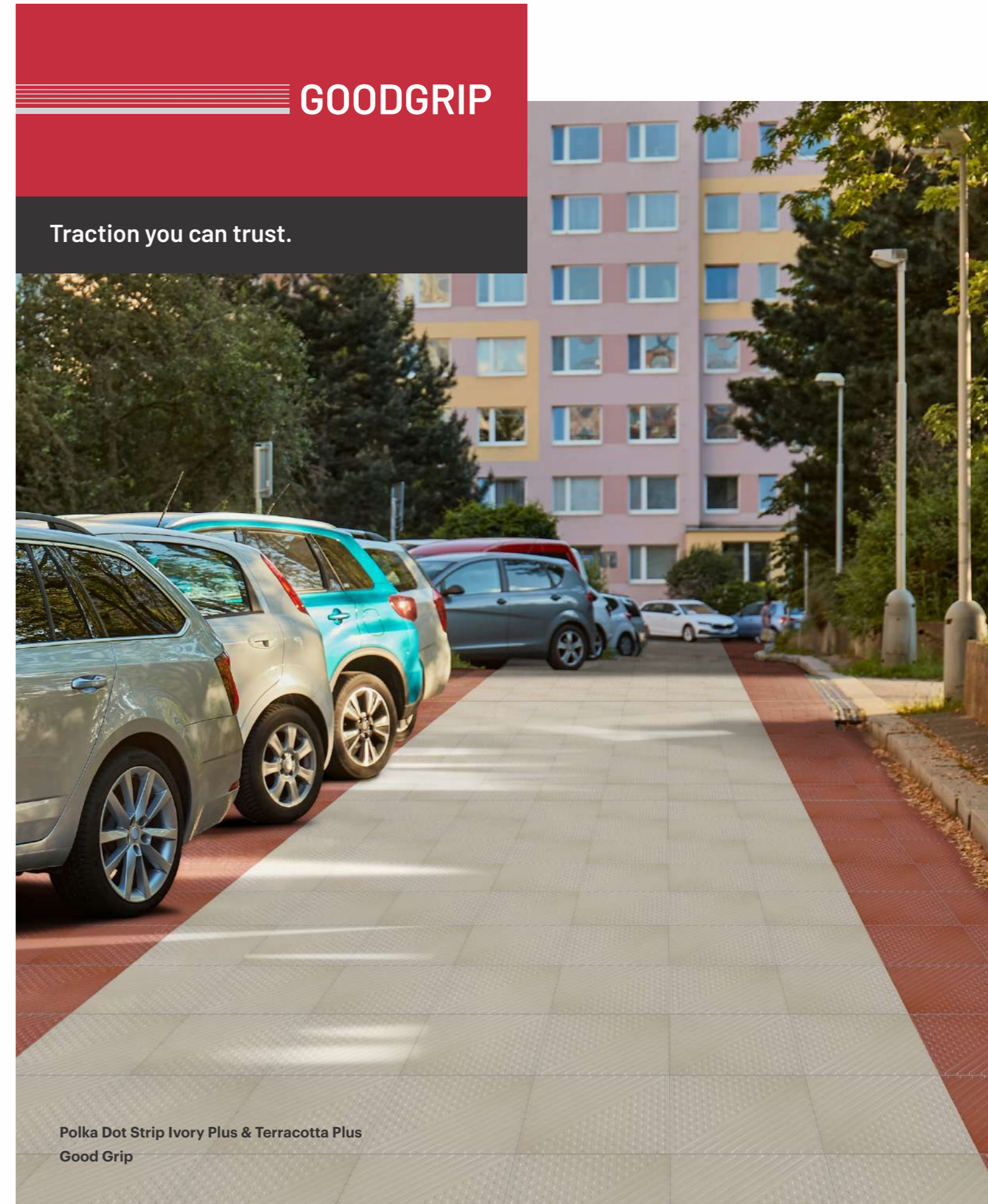
Yellow D/K

CORE ENDURA COLOUR SERIES

S. No.	Test Description	I.S.- 4457:2007	IS - 15622:2017 Group B1b	Hi-Traffic Colour Series	Test Method
A) Dimension Quality					
				30X30X1.0 CM	
1	Deviation in Length & Width (Rectified)	±0.5%	±0.1%	±0.1%	IS 4457:2007 Annex B / IS 13630-1
2	Deviation in Thickness	±5%	±5%	±4%	
3	Straightness of Sides (Rectified)	±0.2%	±0.1%	±0.1%	
4	Rectangularity (Rectified)	±0.2%	±0.1%	±0.1%	
5	Surface Flatness	±0.3%	±0.5%	±0.3%	
6	Surface Quality	Min 95%	Min 95%	Min 95%	
B) Physical Properties					
1	Water Absorption	<0.5%	0.08<E≤3	<0.5%	IS 13630-2
2	a) Scratch hardness of surface (Moh's scale) - Unglazed tile	–	≥5	>7	IS 13630 part 13
	b) Scratch hardness of surface (Moh's scale) - Glazed tile	–	≥5	≥6	
3	Flexural Strength (Average MOR)	>35N/mm ²	>30N/mm ²	>35N/mm ²	IS 13630 - 6
4	Breaking Strength	≥1300N	≥1100N	>1800 N	IS 13630 - 6
5	Impact Resistance	Manufacturer to declare	≥0.55	≥0.55	IS 13630 -14
6	Deep Abrasion resistance (Unglazed tile)	<175mm ³	<175mm ³	<120 mm ³	IS 13630 -12
7	Resistance to Surface Abrasion of Glazed Tiles for Floor Application	–	Class II, Min	Min PEI IV - V	IS 13630 - 11
# Skid Resistance					
8	a) Skid Resistance - Ramp Test	–	–	>R9	DIN 51130
	b) Coefficient of Friction	–	–	>0.42	ISO 10545 -17 / ANSI A 326.3
9	Frost Resistance	–	Manufacturer to declare	No damage	IS 13630 -10
10	Density (gm/cc)	–	≥2	>2.2	IS 13630 part 2
11	Moisture Expansion	Manufacturer to declare	–	≤0.3 mm/m	IS 13630-part 3
12	Color Resistance to UV Light	–	–	No change in color	DIN 51094
C) Chemical Properties					
1	Resistance to Concentrated HNO ₃ & H ₂ SO ₄ Acid (wt. Loss)	<1.5 %	–	<0.8%	IS 4457:2007 Annex G
Resistance to Chemicals					
2	a) Resistance to Low concentrations of acids & alkalies	Manufacturer to declare	Manufacturer to declare	ULA/GLA	ISO 10545-13
	b) Resistance to High concentrations of acids & alkalies	Manufacturer to declare	Manufacturer to declare	UHA/GHA	
	c) Resistance to household chemicals and swimming pool salts	Manufacturer to declare	AA min	AA min	
3	Stain Resistance	–	Class 1 min	Class 1 min	IS 13630 part 8
D) Thermal Properties					
1	Linear Thermal Expansion	–	<7 x10 ⁻⁶ K ⁻¹	<7 x10 ⁻⁶ K ⁻¹	IS 13630 part 4 / ISO 10545-8
2	Thermal Shock Resistance	–	10 cycle, Min	No damage	IS 13630 part 5 / ISO 10545-9

Ramp Test: Suitable for all kind of surfaces (Plain, structural..etc)

Slider (BOT -3000E Digital Tribometer): Suitable for plain / smooth surface and not working for structural / profiled surface




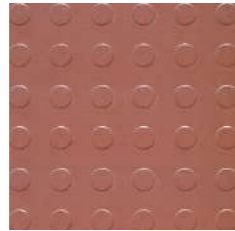
Polka Dot Strip Ivory Plus & Terracotta Plus
Good Grip

Series : Good Grip Size : 30x30 cms Thickness : 1 cm Finish : Matt

Polka Dot




Ivory Plus 




Terracotta Plus 

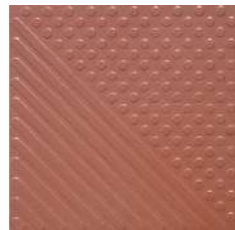


Grey Plus 

Polka Dot Strip

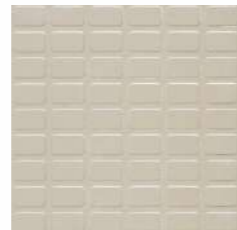


Ivory Plus 

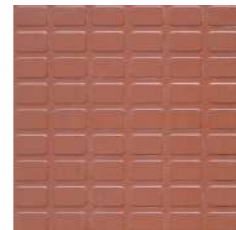


Terracotta Plus 

Polka Rectangle




Ivory Plus 

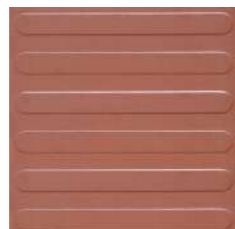


Terracotta Plus 

Polka Strip




Ivory Plus 



Terracotta Plus 

Tracia




Ivory Plus 

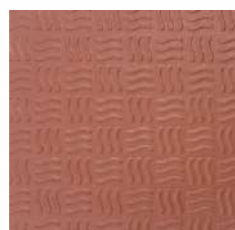



Terracotta Plus 

Wavy



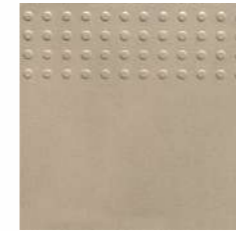
Ivory Plus 



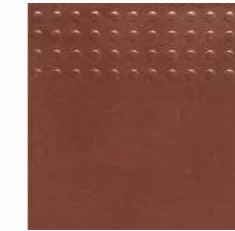
Terracotta Plus 


Series : Good Grip Size : 30x30 cms Thickness : 1 cm Finish : Matt

Bubble Step Treads



Ivory Plus 

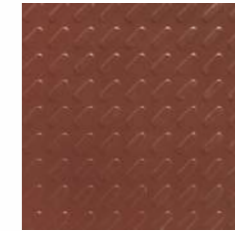



Terracotta Plus 

Capsul




Ivory Plus 



Terracotta Plus 

Checkered




Grey Plus 



Ivory Plus 

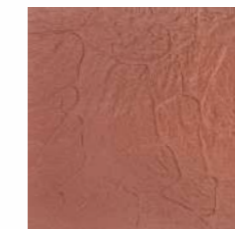


Terracotta Plus 

Cobblestone

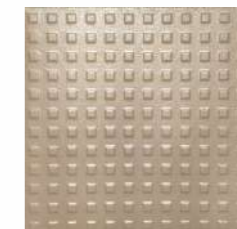


Ivory Plus 

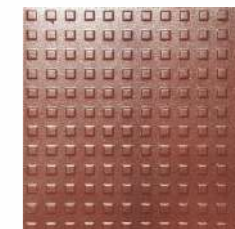



Terracotta Plus 

Cubix

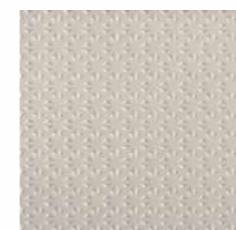



Ivory Plus 




Terracotta Plus 

Diamond Cut



Ivory Plus 

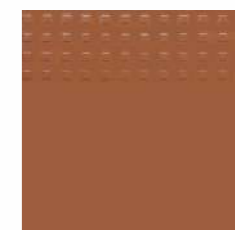


Terracotta Plus 

Cubix Step Treads



Ivory Plus 



Terracotta Plus 



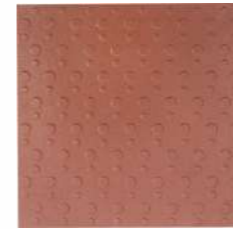
Series : Good Grip

Size : 30x30 cms

Thickness : 1 cm

Finish : Matt

Polka Delta Dot



Terracotta Plus D/K



Ivory Plus D/K

Polka Check

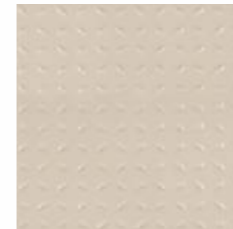


Terracotta Plus D/K



Ivory Plus D/K

Big Check



Ivory Plus D/K



Terracotta Plus D/K

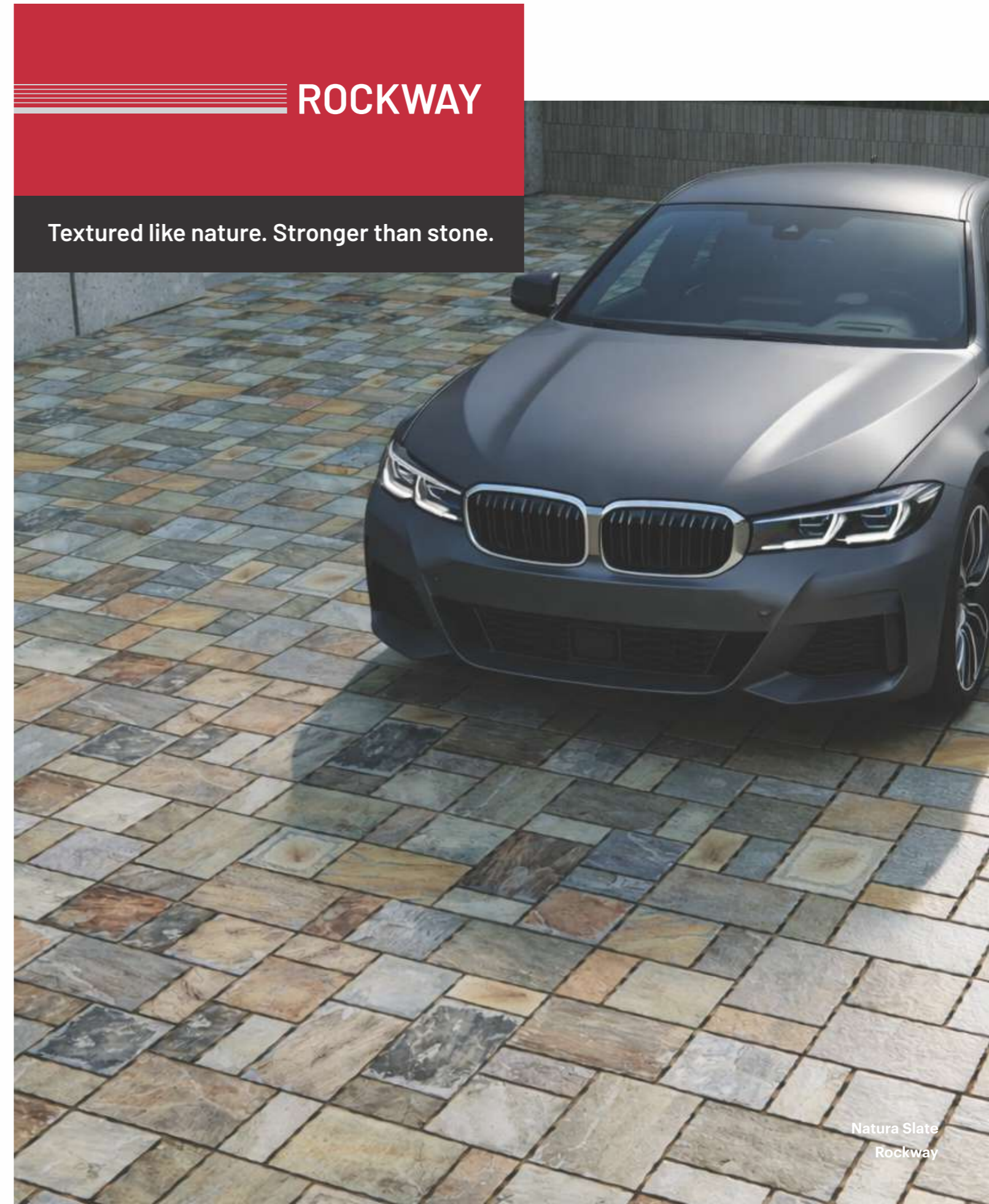
Polka check grey plus & Ivory Plus
Good Grip

GOOD GRIP

S. No.	Test Description	I.S.- 4457:2007	IS - 15622:2017 Group B1b	Hi-Traffic Good Grip	Test Method
A) Dimension Quality					
1	Deviation in Length & Width (Rectified)	±0.5%	±0.1%	±0.1%	IS 4457:2007 Annex B / IS 13630-1
2	Deviation in Thickness	±5%	±5%	±4%	
3	Straightness of Sides (Rectified)	±0.2%	±0.1%	±0.1%	
4	Rectangularity (Rectified)	±0.2%	±0.1%	±0.1%	
5	Surface Flatness	±0.3%	±0.5%	±0.3%	
6	Surface Quality	Min 95%	Min 95%	Min 95%	
B) Physical Properties					
1	Water Absorption	<0.5%	0.08<E≤3	<0.5%	IS 13630-2
2	a) Scratch hardness of surface (Moh's scale) - Unglazed tile	–	≥5	≥7	IS 13630 part 13
	b) Scratch hardness of surface (Moh's scale) - Glazed tile	–	≥5	≥6	
3	Flexural Strength (Average MOR)	>35N/mm ²	>30N/mm ²	>35N/mm ²	IS 13630 - 6
4	Breaking Strength	≥1300N	≥1100N	>1800 N	IS 13630 - 6
5	Impact Resistance	Manufacturer to declare	≥0.55	≥0.55	IS 13630 -14
6	Deep Abrasion resistance (Unglazed tile)	<175mm ³	<175mm ³	<120 mm ³	IS 13630 -12
7	Resistance to Surface Abrasion of Glazed Tiles for Floor Application	–	Class II, Min	Min PEI IV - V	IS 13630 - 11
# Skid Resistance					
8	a) Skid Resistance - Ramp Test	–	–	>R9	DIN 51130
	b) Coefficient of Friction	–	–	>0.42	ISO 10545 -17 / ANSI A 326.3
9	Frost Resistance	–	Manufacturer to declare	No damage	IS 13630 -10
10	Density (gm/cc)	–	≥2	>2.2	IS 13630 part 2
11	Moisture Expansion	Manufacturer to declare	–	≤0.3 mm/m	IS 13630-part 3
12	Color Resistance to UV Light	–	–	No change in color	DIN 51094
C) Chemical Properties					
1	Resistance to Concentrated HNO ₃ & H ₂ SO ₄ Acid (wt. Loss)	<1.5 %	–	<0.8%	IS 4457:2007 Annex G
Resistance to Chemicals					
2	a) Resistance to Low concentrations of acids & alkalies	Manufacturer to declare	Manufacturer to declare	ULA/GLA	ISO 10545-13
	b) Resistance to High concentrations of acids & alkalies	Manufacturer to declare	Manufacturer to declare	UHA/GHA	
	c) Resistance to household chemicals and swimming pool salts	Manufacturer to declare	AA min	AA min	
3	Stain Resistance	–	Class 1 min	Class 1 min	IS 13630 part 8
D) Thermal Properties					
1	Linear Thermal Expansion	–	<7 x10 ⁻⁶ K ⁻¹	<7 x10 ⁻⁶ K ⁻¹	IS 13630 part 4 / ISO 10545-8
2	Thermal Shock Resistance	–	10 cycle, Min	No damage	IS 13630 part 5 / ISO 10545-9

Ramp Test: Suitable for all kind of surfaces (Plain, structural..etc)

Slider (BOT - 3000E Digital Tribometer): Suitable for plain / smooth surface and not working for structural / profiled surface



Natura Slate
Rockway

Series : Rockway

Size : 36x24, 24x24 & 24x12 cms

Thickness : 1.5 cm

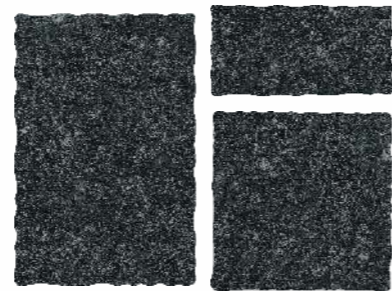
Finish : Matt



Andes Ash K



Andes Camel K



Andes Coal K



Basalt Coal K



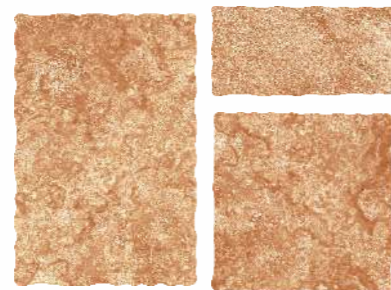
Basalt Gris K



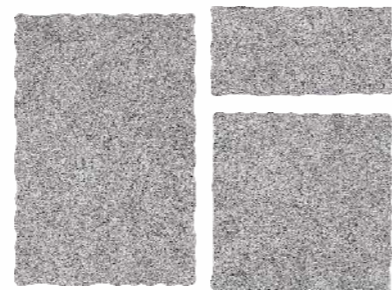
Basalt Ochre K



Basalt Red K



Forest Stone K



Gabbro Gris K



Gabbro Verde K



Graphite Rust K



Natura Slate K

Series : Rockway

Size : 36x24, 24x24 & 24x12 cms

Thickness : 1.5 cm

Finish : Matt



Pumice Taupe K



Quartzite Gris K



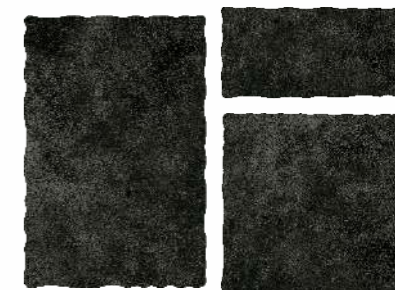
Quartzite Silver K



Sandstone Beige K



Sandstone Gold K



Slate Nero K



Talc Gris K



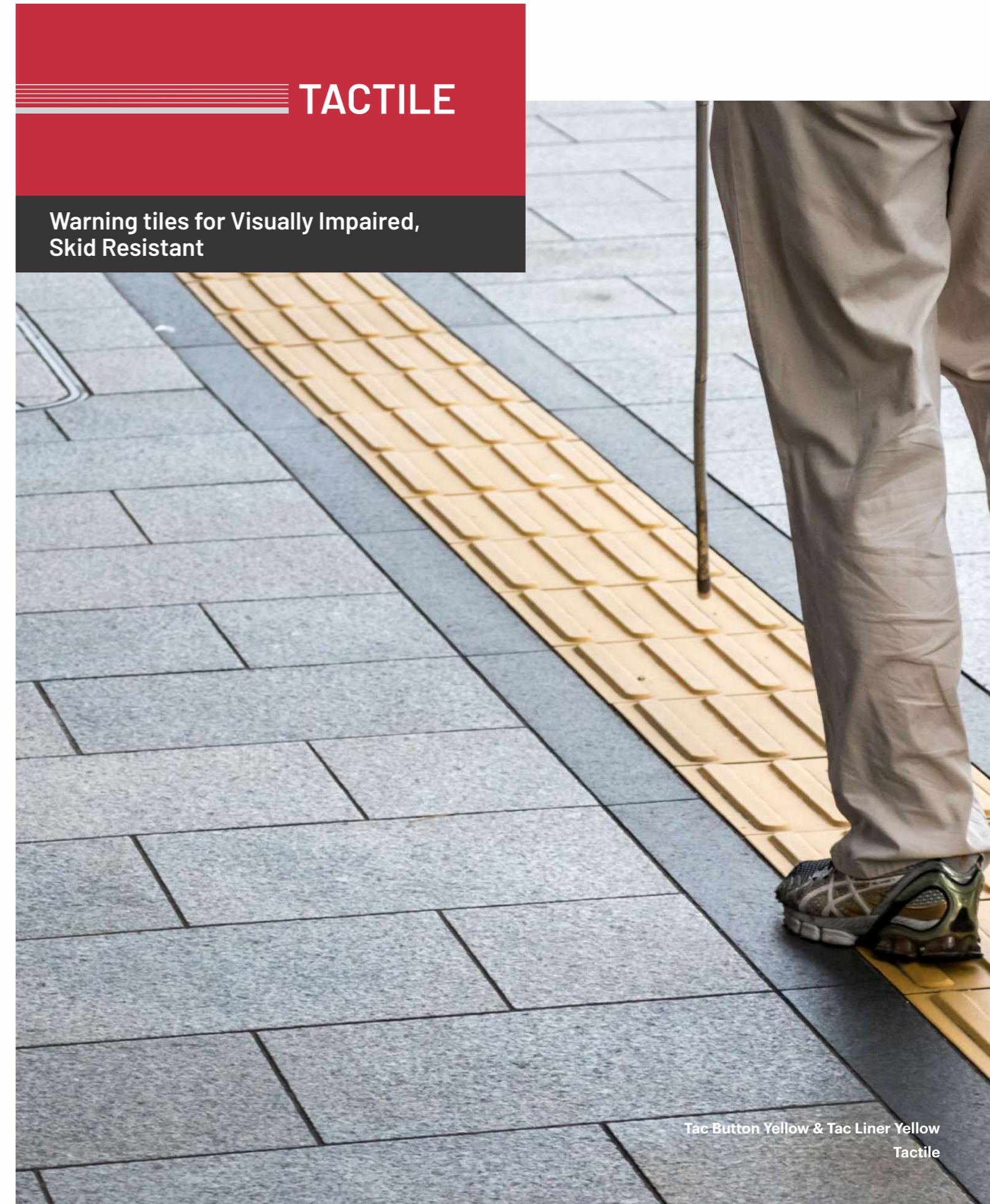
Terra Stone K



Walfra Stone K

ROCKWAY

Sr. No	Technical Features	Reference Standard	Our Value	Test method
1	Technical Features	± 0.3	Suitable for	ISO 10545 - 2
2	Thickness	± 0.5	Suitable for	
3	Straightness of Sides	± 0.3	Suitable for	
4	Rectangularity	± 0.3	Suitable for	
5	Surface Flatness	c.c. ± 0.4	c.c. ± 0.2	ISO 10545 - 2
		e.c. ± 0.4	e.c. ± 0.2	
		w. ± 0.4	w. ± 0.2	
6	Water Absorption (in % by mass)	EV. ± 0.5% Individual	EV. ≤ 0.5%	ISO 10545 - 3
7	Breaking Strength	S ≥ 1300N	> 3000N	ISO 10545 - 4
8	Modulus of Rupture	R ≥ N/mm ²	R ≥ 45 N/mm ²	
9	Impact Resistance, as Coefficient of Restitution	Declared Value	≥ 0.55	ISO 10545 - 5
10	Mohs Hardness	6	7	EN 101
11	Resistance to Deep Abrasion (removed volume)	≤ 175 mm ²	≤ 150 mm ³	ISO 10545 - 6
12	Coefficient of Thermal Linear Expansion	Declared Value	≤ 7MK ⁻¹	ISO 10545 - 8
13	Thermal Shock Resistance	Pass According to EN ISO 10545 -1	Resistant	ISO 10545 - 9
14	Moisture Expansion (in mm/m)	Declared Value	≤ 0.01% (0.1 mm/m)	ISO 10545 - 10
15	Frost Resistance	Pass According to EN ISO 10545 -1	Resistant	ISO 10545 - 12
16	Bond Strength / Adhesion for Improved Cementitious Adhesives	Declared Value	≥ 1N/mm ² (Class C2 - EN 12004)	EN 1348
17	Fire Resistance	-	Non combustible	-
18	Resistance to Household Chemicals and Swimming Pool Salts	Minimum Class B	A	ISO 10545 - 13
19	Resistance to Low Concentrations of Acids & Alkalies	Declare Class	LA	
20	Resistance to High Concentrations of Acids & Alkalies	Declare Class	HA	
21	Resistance to Staining	Declare Class	5	ISO 10545 - 14
22	Skid Resistance	Declared Value	R11	DIN 51130
23	Pendulum Friction Test	PTV ≥ 36	≥ 36 Dry ≥ 36 Wet	BS 7976
24	Coefficient of Friction (COF)	μ 20.40	≥ 0.40 Dry ≥ 0.40 Wet	B.C.R.A. Rep. CEC/87



Tac Button Yellow & Tac Liner Yellow
Tactile

Series : Tactile Series

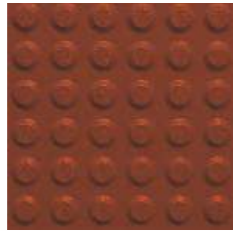
Size : 30x30 cms


Thickness : 1.2, 1.5 & 2.5 cm

Finish : Matt



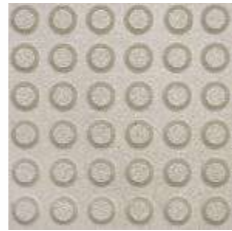
Tac Button 
Metro Yellow^#




Tac Button 
Terracotta^#



Tac Button 
Yellow^#



Tac Button Ivory 
^#



Tac Liner 
Metro Yellow^#




Tac Liner
Terracotta^#



Tac Liner
Yellow^#



Tac Liner Ivory 
^#



Tac Button Metro Yellow
Tactile

TACTILE

PACKING DETAILS

S. No.	Test Description	I.S.- 4457:2007	IS - 15622:2017 Group B1b	Johnson Endura Tactile			Test Method
				1.2 cm	1.5 cm	2.5 cm	
A) Dimension Quality							
1	Deviation in Length & Width	±0.5%	±0.1%	±0.1%	±0.1%	±0.1%	IS 4457:2007 Annex B / ISO 10545-2
2	Deviation in Thickness	±5%	±5%	±4%	±4%	±4%	
3	Straightness of Sides	±0.2%	±0.1%	±0.1%	±0.1%	±0.1%	
4	Rectangularity	±0.2%	±0.1%	±0.1%	±0.1%	±0.1%	
5	Surface Flatness	±0.3%	±0.5%	±0.3%	±0.3%	±0.3%	
6	Surface Quality	Min 95%	Min 95%	Min 95%	Min 95%	Min 95%	
B) Physical Properties							
1	Water Absorption	< 0.5%	0.08<E≤3	< 0.5%	< 0.5%	< 0.5%	IS 4457:2007 Annex C / ISO 10545-3
2	a) Scratch hardness of surface (Moh's scale) - Unglazed tile	-	≥5	≥7	≥7	≥7	IS 13630 part 13
	b) Scratch hardness of surface (Moh's scale) - Glazed tile	-	≥5	≥6	≥6	≥6	
3	Flexural Strength (Average MOR)	>35N/mm ²	>30N/mm ²	>38N/mm ²	>38N/mm ²	>38N/mm ²	IS 4457:2007 Annex D / ISO 10545-4/IS 13630-6
4	Breaking Strength	≥1300N	≥1100N	>1600 N	>3000 N	>8500 N	IS 4457:2007 Annex D / ISO 10545-4/IS 13630-6
5	Impact Resistance	Manufacturer to declare	≥0.55	≥0.55	≥0.55	≥0.55	ISO 10545-5 / IS 13630 -14
6	Deep Abrasion Resistance (Unglazed tile)	<175mm ³	<175mm ³	<120 mm ³	<120 mm ³	<120 mm ³	IS 4457:2007 Annex E / ISO 10545-6/IS 13630-12
7	Resistance to Surface Abrasion of Glazed Tiles for Floor Application	-	Class II, Min	Min PEI IV	Min PEI IV - V	Min PEI IV - V	ISO 10545-7 / IS 13630-11
8	# Skid Resistance						
	a) Skid Resistance - Ramp Test	Manufacturer to declare	Manufacturer to declare	≥R9	≥R9	≥R9	DIN 51130
	b) Coefficient of Friction	Manufacturer to declare	Manufacturer to declare	>0.42	>0.42	>0.42	ISO 10545-17 / ANSI A 326.3
9	Frost Resistance	-	-	No damage	No damage	No damage	ISO 10545-12 / IS 13630-10
10	Density (gm/cc)	-	≥2.0	>2.2	>2.2	>2.2	IS 13630 part 2
11	Moisture Expansion	Manufacturer to declare	Manufacturer to declare	≤0.3mm/m	≤0.3mm/m	≤0.3mm/m	IS 13630-part 3 / ISO 10545-10
12	Color Resistance to UV Light	Report result	-	No change in color	No change in color	No change in color	DIN 51094
C) Chemical Properties							
1	Resistance to Concentrated HNO ₃ & H ₂ SO ₄ Acid (wt. Loss)	<1.5 %	-	<0.8%	<0.8%	<0.8 %	IS 4457:2007 Annex G
2	Resistance to Chemicals						
	a) Resistance to Low concentrations of acids & alkalis	Manufacturer to declare	Manufacturer to declare	ULA /GLA	ULA /GLA	ULA /GLA	ISO 10545-13/IS 13630 -8
	b) Resistance to High concentrations of acids & alkalis	Manufacturer to declare	Manufacturer to declare	UHA /GHA	UHA /GHA	UHA /GHA	
c) Resistance to household chemicals and swimming pool salts	Manufacturer to declare	AA min	AA min	AA min	AA min		
3	Stain resistance	Resistant	Resistant	Resistant	Resistant	Resistant	IS 13630 part 7 / ISO 10545-14
D) Thermal Properties							
1	Linear Thermal Expansion	-	≤7x10 ⁻⁶ K ⁻¹	≤7x10 ⁻⁶ K ⁻¹	≤7x10 ⁻⁶ K ⁻¹	≤7x10 ⁻⁶ K ⁻¹	IS 13630 part 4 / ISO 10545-8
2	Thermal shock resistance	No damage	No damage	No damage	No damage	No damage	IS 13630 part 5 / ISO 10545-9
E) The profile of raised Button / Liner							
20	Raised Button / Liner Height	-	-	4.5mm to 5.0mm	4.5mm to 5.0mm	4.5mm to 5.0mm	DETR Standard Chapter 6 / ISO 23599:2012

Ramp Test: Suitable for all kind of surfaces (Plain, structural..etc)

Slider (BOT -3000E Digital Tribometer): suitable for plain / smooth surface and not working for structural / profiled surface

Product	Nominal Size (cm)	No. of Tiles/Box	Approx Area/ Box (sq.m)	Approx Weight/ Box (kgs)	Approx Cartons/20' Container	Approx Area/20' Container (sq.m)
Maxgrip						
60x60cm - R11	60x60 - R11	3	1.08	36	750	810
30x30cm - 1.0cm	30x30 - R10	10	0.90	18.6	1451	1306
Meteor						
60x60 (1.5cm Thk) Pen	60x60	3	1.08	35	771	833
60x60 (1.5cm Thk) Dewas	60x60	3	1.08	39	692	747
60x60 (2cm Thk) Dewas	60x60	2	0.72	34.4	784	564
Hi-Traffic						
60x60 (1cm Thk) (Sandex)	60X60	4	1.44	30	900	1296
60x60 (1.2cm Thk) (Sandex)	60X60	4	1.44	37.5	720	1037
EDC						
40x40 (Rajkot)	40x40	5	0.80	18.2	1483	1186
40x40 (Kunigal)	40x40	5	0.80	19	1421	1137
30x30 (1cm Thk) (Kunnigal)	30x30	8	0.72	15.8	1708	1230
Hi-Traffic (Core)						
30x30 (1cm Thk) Dewas	30x30	10	0.90	19.94	1354	1219
30x30 (1cm Thk) Kunigal	30x30	10	0.90	19.45	1388	1249
Hi-Traffic Colours						
30x30 (1cm Thk) Coated Dewas	30X30	10	0.9	20	1350	1215
30x30 (1cm Thk) Coated Kunigal	30X30	10	0.9	19.5	1384	1246
Hi-Traffic Good Grip						
30x30 (1cm Thk) Coated Dewas	30X30	10	0.9	20	1350	1215
30x30 (1cm Thk) Coated Kunigal	30X30	10	0.9	19.5	1384	1246
Rockway						
36x24 cm (1.5cm Thk)	36x24	8	7.44	22.6	1106	764
24x24 cm (1.5cm Thk)	24x24	13	8.06	24.1	1037	776
24x12 cm (1.5cm Thk)	24x12	26	8.06	24.8	1009	754
Tactile						
30x30 (1.2cm Thk) Dewas	30x30	8	0.72	15.3	1764	1270
30x30 (1.5cm Thk) Dewas	30x30	6	0.54	14.8	1824	985
30x30 (2.5cm Thk) Dewas	30x30	4	0.36	17.5	1542	555

LET'S GET YOUR GROUND GAME RIGHT.

Whatever your project - a sprawling commercial complex or a single-lane driveway - Endura has a tile for it. Our experts are here to guide you through selections, samples, and specifications. From visualizing your surface to delivering the right combination of load-bearing performance and aesthetic appeal - we're here to help you get it done right.

Contact us to explore:

[The full Endura range in person](#)

[Visual mock-ups for your project type](#)

[Technical specs and compatibility queries](#)

[Dealer support and branch office details](#)

[Visit a showroom \(experience center / dealer locator link\)](#)

Because first impressions start from the ground up. And no one does it like Endura.

To visit Website,
Scan the QR code





BRO042026MXE001CC - Cat/Endura/Mix/Parking Solutions/April'26

Corporate Office:

Rahejas, 3rd Floor, Main Avenue, V.P. Road, Santacruz (W), Mumbai -400054

☎ 022 6986 7300 | ☎ +91 84510 57484 | ☎ 1800-210-7484 (Toll free)

🌐 www.hrjohnsonindia.com | ✉ tiles.customercare@prismjohnson.in